

# DHCD EA Monthly Report, Statewide Summary

## March 2020

### EA Applications and Placements

EA Applications	Mar-20	Feb-20	FY20 YTD
Families Applying for EA	317	540	5,244
Health & Safety Assessments Completed	125	202	1,925
Families with Health & Safety Risk	174	108	1,654
Families Entering EA (Shelter, Motels, and HomeBASE)	288	329	3,203
Placement-to-Application Ratio	91%	61%	61%

**Notes:**

Families submitting more than one application during a month were counted once.

Families entering EA includes families entering shelter or hotels/motels and families diverted from shelter or hotels/motels into HomeBASE at the front door.

HAS assessment data for February and March are estimates based on referrals to DCF.

36 families (1% of families referred) received multiple HAS assessments during the previous 6 months.

The standard used to determine substantial health and safety risk can be found at the following link:

<https://www.mass.gov/files/documents/2016/07/oe/healthandsafetyassessmentinitiativeadministrativeplan.pdf>

EA Placements	Mar-20		Feb-20		FY20 YTD	
	Number	Percent	Number	Percent	Number	Percent
Total Entering EA or HomeBASE	288	100%	329	100%	3,203	100%
Entering EA Shelter/Motels	213	74%	255	78%	2,545	79%
Presumptive Placements	85	30%	65	20%	540	17%
Shelters	211	73%	255	78%	2,544	79%
Motels	2	1%	0	0%	10	<1%
HomeBASE Diversions (Front Door)	75	26%	74	22%	658	21%

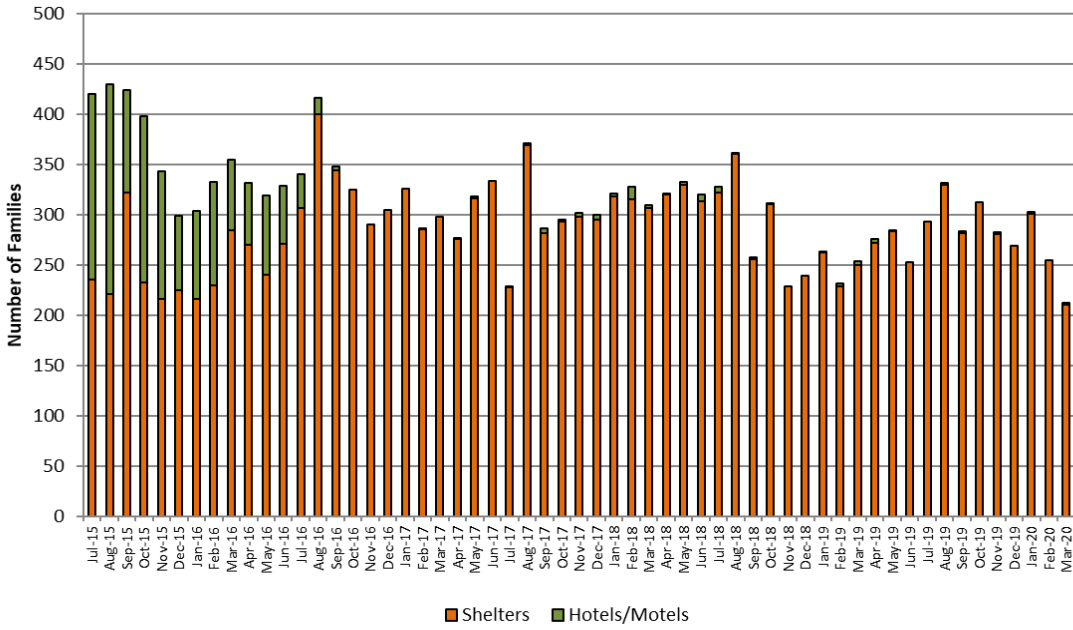
### EA Shelter/Motels Placements, Reasons for Homelessness

	Mar-20		Feb-20		FY20 YTD	
	Number	Percent	Number	Percent	Number	Percent
<b>Total</b>	<b>213</b>	<b>100%</b>	<b>255</b>	<b>100%</b>	<b>2,545</b>	<b>100%</b>
Domestic Violence	45	21%	44	17%	453	18%
Fire/Natural Disaster	2	1%	7	3%	21	1%
Evict: Condemnation	3	1%	3	1%	28	1%
Evict: Excused Conduct	0	0%	1	<1%	14	1%
Evict: Foreclosure	0	0%	1	<1%	8	<1%
Evict: Non Payment - Medical	0	0%	0	0%	2	<1%
Evict: Non Payment - Disability	0	0%	0	0%	5	<1%
Evict: Non Payment - Income Loss	11	5%	13	5%	197	8%
Evict: Non Renewal of Tenancy	3	1%	4	2%	34	1%
Threatened Evict - Unauthorized Tenant	18	8%	23	9%	152	6%
H&S: Violent Conduct	6	3%	9	4%	58	2%
H&S: Mental Illness	0	0%	3	1%	26	1%
H&S: Substance Abuse	0	0%	4	2%	8	<1%
H&S: Conditions in Unit	6	3%	7	3%	47	2%
H&S: Irregular Housing situation	70	33%	95	37%	1,016	40%
H&S: Not Meant for Human Habitation	38	18%	29	11%	373	15%
TESI or Aid Pending	11	5%	12	5%	103	4%

**Note:** Families whose HomeBASE rental assistance benefit ended during the month may be placed in later months.

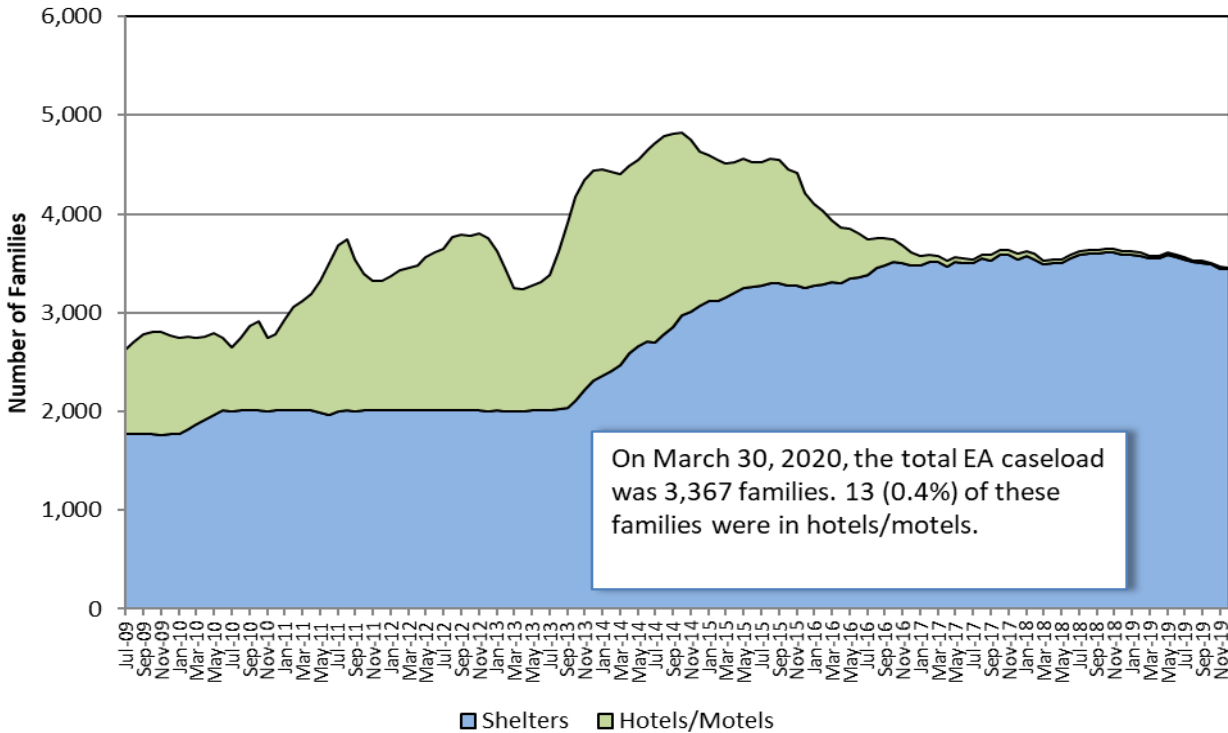
**Sources:** EA Daily Entry Reports and ASIST.

### EA Shelter and Hotel/Motel Placements



### EA Caseload

#### Average Daily EA Shelter & Hotel/Motel Caseload, Jul. 2009- Mar. 2020



**Note:** Methodology for calculating shelter caseload changed in FY15 from an average daily number of contracted units (minus vacancies) to an end-of-the-month count of occupied shelter units using DHCD's bed registry.

## Children Served

Age Range	Mar-20		Feb-20		FY20 Monthly Average	
	# Children	% Children	Number	Percent	Number	Percent
<b>Total</b>	<b>6,803</b>	<b>100%</b>	<b>6,971</b>	<b>100%</b>	<b>6,974</b>	<b>100%</b>
0-2 yrs.	1,466	22%	1,535	22%	1,516	22%
3-4 yrs.	951	14%	961	14%	973	14%
5-8 yrs.	1,541	23%	1,590	23%	1,597	23%
9-11 yrs.	1,007	15%	1,028	15%	1,034	15%
12-14 yrs.	874	13%	876	13%	870	12%
15-18 yrs.	768	11%	782	11%	797	11%
19-20 yrs.	196	3%	199	3%	187	3%

**Note:** Data indicate children active in EA shelters or hotels at end of the month.

## EA Exits

Families Exiting Shelter and Hotels/Motels	Mar-20		Feb 20		FY20 YTD	
	Number	Percent	Number	Percent	Number	Percent
<b>Total Exits</b>	<b>282</b>	<b>100%</b>	<b>270</b>	<b>100%</b>	<b>2,633</b>	<b>100%</b>
Abandoned	23	8%	28	10%	277	11%
Criminal Activity	0	0%	1	0%	3	<1%
Feasible Alternative Housing with HB	176	62%	176	65%	1,721	65%
Feasible Alternative Housing without HB	38	13%	27	10%	297	11%
Ineligible	6	2%	9	3%	47	2%
Rejected Placement	4	1%	4	1%	17	1%
Noncompliance	3	1%	3	1%	21	1%
Temporary Shelter Interruption	20	7%	13	5%	170	6%
Other/Unknown	12	4%	9	3%	80	3%

**Notes:**

Families terminated from shelter for abandoning their placements or non-compliance may return to the system pending an appeal.

Families receiving a Temporary Shelter Interruption may return to the system within 30 days.

Types of Subsidies	Mar-20		Feb-20		FY20 YTD	
	Number	Percent	Number	Percent	Number	Percent
<b>Total Families Receiving Subsidies</b>	<b>199</b>	<b>100%</b>	<b>197</b>	<b>100%</b>	<b>1,911</b>	<b>100%</b>
ESG	2	1%	3	2%	10	1%
HomeBASE	176	88%	176	89%	1,721	90%
HUD CoC	5	3%	9	5%	69	4%
MRVP	7	4%	4	2%	51	3%
Private Subsidized Housing	13	7%	7	4%	82	4%
Section 8 Mobile Voucher	89	45%	78	40%	771	40%
Section 8 Project-Based Voucher	10	5%	8	4%	93	5%
Other Public Housing	17	9%	11	6%	136	7%
Transportation	0	0%	1	1%	13	1%

**Notes:**

Families may receive multiple subsidy types. Therefore, the sum of the subsidy types do not equal the number of families.

Data based on date of shelter/hotel exit. HomeBASE data based on the date that checks are issued may vary.

<b>EA Length of Stay</b>	<b>Mar-20</b>	<b>Feb-20</b>	<b>FY20 YTD</b>
Average Length of Stay (days)	426	427	428
Median Length of Stay (days)	344	314	345
Minimum Cost Per Family	\$126	\$126	\$126
Maximum Cost Per Family	\$344,610	\$284,886	\$344,610
Average Cost Per family	\$53,663	\$53,823	\$53,928

<b>Families who were Sheltered and Required Assistance at a Later Date</b>	<b>Mar-20</b>		<b>Feb-20</b>		<b>FY20 YTD</b>	
	<b>Number</b>	<b>Percent</b>	<b>Number</b>	<b>Percent</b>	<b>Number</b>	<b>Percent</b>
<b>Families Requiring Later Assistance</b>	<b>33</b>	<b>100%</b>	<b>39</b>	<b>100%</b>	<b>387</b>	<b>100%</b>
Strategic Prevention	1	3%	1	3%	14	4%
HomeBASE Diversion	16	49%	19	49%	191	49%
Entering EA Shelter or Hotel	16	49%	19	49%	182	47%

**Notes:**

Data based on families who were in EA shelters or hotels during the previous 5 fiscal years who returned for assistance.

Families entering EA shelters or hotels may have also received Strategic Prevention or HomeBASE assistance, which was not reported to avoid counting households multiple times.

<b>Families Entering EA Shelters/Hotels who Received HomeBASE during the 3 Previous Years</b>	<b>Mar-20</b>	<b>Feb-20</b>	<b>FY20 YTD</b>
Total Families Entering After HomeBASE	22	17	179
Percent of All EA Shelter/Hotel Entries	10.3%	6.7%	7.0%
Percent of All Receiving HB in Previous 3 yrs.	0.2%	0.2%	1.5%

<b>Families who Applied for EA within 12 Months of HomeBASE Ending</b>	<b>Mar-20</b>		<b>Feb-20</b>		<b>FY20 YTD</b>	
	<b>Number</b>	<b>Percent</b>	<b>Number</b>	<b>Percent</b>	<b>Number</b>	<b>Percent</b>
<b>Total Families</b>	<b>22</b>	<b>100%</b>	<b>16</b>	<b>100%</b>	<b>175</b>	<b>100%</b>
Domestic Violence	5	23%	1	6%	23	13%
Fire/Natural Disaster	0	0%	1	6%	1	1%
Evict: Condemnation	0	0%	0	0%	0	0%
Evict: Excused Conduct	0	0%	0	0%	1	1%
Evict: Foreclosure	0	0%	0	0%	2	1%
Evict: Non Payment - Medical	0	0%	0	0%	0	0%
Evict: Non Payment - Disability	0	0%	0	0%	2	1%
Evict: Non Payment - Income Loss	3	14%	3	19%	23	13%
Evict: Non Renewal of Tenancy	1	5%	2	13%	6	3%
Threatened Evict - Unauthorized Tenant	1	5%	1	6%	10	6%
H&S: Violent Conduct	0	0%	0	0%	4	2%
H&S: Mental Illness	0	0%	0	0%	1	1%
H&S: Substance Abuse	0	0%	0	0%	0	0%
H&S: Conditions in Unit	0	0%	0	0%	3	2%
H&S: Irregular Housing situation	6	27%	6	38%	62	35%
H&S: Not Meant for Human Habitation	4	18%	0	0%	26	15%
Other	2	9%	2	13%	11	6%

Families who Applied for EA within 12 Months of HomeBASE Ending who were Denied	Mar-20		Feb-20		FY20 YTD	
	Number	Percent	Number	Percent	Number	Percent
<b>Total Families Denied</b>	<b>0</b>		<b>5</b>	<b>100%</b>	<b>40</b>	<b>100%</b>
Application Not Completed	0		1	20%	13	33%
No Qualifying Reason for Homelessness	0		2	40%	8	20%
Over Income	0		1	20%	9	23%
Received EA Benefit/Refused EA Placement within 12 Months	0		1	20%	5	13%
Terminated Employment without Good Cause	0		0	0%	1	3%
Terminated from HomeBASE within 24 months	0		0	0%	4	10%

## RAFT - Homelessness Prevention

RAFT	Mar-20		Feb-20		YTD 20 YTD	
	Number	Percent	Number	Percent	Number	Percent
<b>Total Applying</b>	<b>463</b>		<b>581</b>		<b>5,772</b>	
Total Approved	418	100%	543	100%	5,355	100%
Upstream rent arrears-public/subsidized	30	7%	28	5%	264	5%
Upstream rent arrears-market rent	63	15%	85	16%	580	11%
Upstream mortgage arrears	7	2%	13	2%	58	1%
Doubled up and asked to leave	91	22%	155	29%	1,524	28%
Domestic violence	11	3%	13	2%	116	2%
Eviction-public/subsidized	51	12%	71	13%	625	12%
Eviction-market rent	90	22%	98	18%	1,127	21%
Foreclosure	1	<1%	4	1%	59	1%
Fire/flood/natural disaster	2	<1%	6	1%	37	1%
Health/safety	32	8%	33	6%	305	6%
Overcrowding	10	2%	10	2%	75	1%
Utility shutoff	8	2%	7	1%	343	6%
Other	22	5%	20	4%	242	5%

**Note:** Families approved for RAFT may have applied during the previous month.

**DHCD - EA Monthly Report  
March 2020**

	Mar #	Mar %	Feb #	YTD #	YTD %
<b>Families Applying for EA</b>					
<b>Total</b>	<b>317</b>	<b>100%</b>	<b>540</b>	<b>5,244</b>	<b>100%</b>
Boston	79	25%	116	1,169	22%
Central Mass	26	8%	45	478	9%
North Shore	112	35%	180	1,578	30%
South Shore	44	14%	77	763	15%
Western Mass	56	18%	122	1,256	24%
<b>Families Placed in EA Shelter and Hotels/Motels</b>					
<b>Total</b>	<b>213</b>	<b>100%</b>	<b>255</b>	<b>2,545</b>	<b>100%</b>
Boston	67	31%	89	881	31%
Central Mass	25	12%	28	270	56%
North Shore	43	20%	56	497	53%
South Shore	43	20%	40	464	49%
Western Mass	35	16%	42	433	0%
<b>HomeBASE Entries (Diversion and Exits)</b>					
<b>Total</b>	<b>261</b>	<b>100%</b>	<b>270</b>	<b>2,503</b>	<b>100%</b>
Berkshire Housing	3	1%	2	33	1%
Community Teamwork, Inc.	27	10%	28	225	9%
Franklin County	2	1%	3	19	1%
Housing Assistance Corp.	2	1%	3	28	1%
Way Finders	52	20%	51	528	21%
Metro Housing Boston	86	33%	92	813	32%
RCAP Solutions	12	5%	10	79	3%
South Middlesex Opportunity Council	8	3%	10	88	4%
NeighborWorks Housing Solutions	49	19%	55	470	19%
Lynn Housing Authority	13	5%	7	116	5%
Central MA Housing Alliance	7	3%	9	104	4%

**Notes**

Average Daily Number of Families in Hotels is calculated as the average across weekly point-in-time estimates from the reported month; Hotel region indicates region of originating eligibility office.

Totals may not equal the sum or regions due to rounding.

**Sources:** EA Daily Entry Report, ASIST, and EA Weekly Motel Reports.

DHCD - EA Monthly Report, Cumulative Data  
March 2020

<b>Families Applying for EA</b>	<b>Jul</b>	<b>Aug</b>	<b>Sept</b>	<b>Oct</b>	<b>Nov</b>	<b>Dec</b>	<b>Jan</b>	<b>Feb</b>	<b>Mar</b>	<b>YTD #</b>	<b>YTD %</b>
<b>Total Families Applying</b>	<b>648</b>	<b>636</b>	<b>623</b>	<b>678</b>	<b>527</b>	<b>562</b>	<b>713</b>	<b>540</b>	<b>317</b>	<b>5,244</b>	<b>100%</b>
Boston	144	153	162	144	123	108	140	116	79	1,169	22%
Central Mass	58	61	54	53	55	65	61	45	26	478	9%
North Shore	171	165	187	202	149	170	242	180	112	1,578	30%
South Shore	101	99	75	105	67	85	110	77	44	763	15%
Western Mass	174	158	145	174	133	134	160	122	56	1,256	24%
<b>Health &amp; Safety Assessment</b>											
<b>H&amp;S Assessment Completed</b>	<b>207</b>	<b>251</b>	<b>226</b>	<b>268</b>	<b>194</b>	<b>185</b>	<b>267</b>	<b>202</b>	<b>125</b>	<b>1,925</b>	<b>100%</b>
Families with H&S Risk	177	211	192	242	163	158	230	174	108	1,654	86%
<b>Families Placed in Shelter/Motels</b>											
<b>Total</b>	<b>293</b>	<b>332</b>	<b>284</b>	<b>313</b>	<b>283</b>	<b>269</b>	<b>303</b>	<b>255</b>	<b>213</b>	<b>2,545</b>	<b>100%</b>
Families Placed in Hotels/Motels	0	2	2	0	2	0	2	0	2	10	<1%
Presumptive Placement	50	66	47	58	55	45	69	65	85	540	21%
Boston	92	96	104	131	104	84	114	89	67	881	35%
Central Mass	38	35	23	29	31	26	35	28	25	270	11%
North Shore	63	72	54	49	50	55	55	56	43	497	20%
South Shore	56	76	52	52	48	45	52	40	43	464	18%
Western Mass	44	53	51	52	50	59	47	42	35	433	17%
<b>Monthly Caseload (# of Families)</b>	<b>7/31/2019</b>	<b>08/31/19</b>	<b>09/30/19</b>	<b>10/31/19</b>	<b>11/30/19</b>	<b>12/31/19</b>	<b>01/31/20</b>	<b>02/29/20</b>	<b>03/31/20</b>	<b>YTD Average</b>	
<b>Total</b>	<b>3,557</b>	<b>3,527</b>	<b>3,521</b>	<b>3,504</b>	<b>3,460</b>	<b>3,451</b>	<b>3,480</b>	<b>3,456</b>	<b>3,367</b>	<b>3,480</b>	
Shelter	3,540	3,509	3,504	3,487	3,442	3,436	3,465	3,441	3,354	3,464	
Hotel/Motel	17	18	17	17	18	15	15	15	13	16	
<b>Children Served</b>	<b>Jul</b>	<b>Aug</b>	<b>Sept</b>	<b>Oct</b>	<b>Nov</b>	<b>Dec</b>	<b>Jan</b>	<b>Feb</b>	<b>Mar</b>	<b>YTD Average</b>	<b>YTD %</b>
<b>Total</b>	<b>7,065</b>	<b>7,016</b>	<b>7,022</b>	<b>7,017</b>	<b>6,940</b>	<b>6,893</b>	<b>7,038</b>	<b>6,971</b>	<b>6,803</b>	<b>6,974</b>	<b>100%</b>
0-2 yrs.	1,577	1,538	1,510	1,520	1,482	1,473	1,547	1,535	1,466	1,516	22%
3-4 yrs.	1,016	996	966	967	969	957	974	961	951	973	14%
5-8 yrs.	1,611	1,617	1,634	1,625	1,590	1,579	1,582	1,590	1,541	1,597	23%
9-11 yrs.	1,048	1,045	1,052	1,037	1,033	1,022	1,036	1,028	1,007	1,034	15%
12-14 yrs.	824	843	859	873	884	888	906	876	874	870	12%
15-18 yrs.	43,891	799	Feb-20	28-Mar	797	787	788	782	768	6,179	89%
19-20 yrs.	178	178	179	177	185	187	205	199	196	187	3%

	Jul	Aug	Sept	Oct	Nov	Dec	Jan	Feb	Mar	YTD #	
<b>Placement to Application Ratio</b>	<b>54%</b>	<b>64%</b>	<b>58%</b>	<b>58%</b>	<b>68%</b>	<b>60%</b>	<b>54%</b>	<b>61%</b>	<b>91%</b>	<b>61%</b>	
<b>Reasons for Homelessness, Shelter/Motels</b>	<b>Jul</b>	<b>Aug</b>	<b>Sept</b>	<b>Oct</b>	<b>Nov</b>	<b>Dec</b>	<b>Jan</b>	<b>Feb</b>	<b>Mar</b>	<b>YTD #</b>	<b>YTD %</b>
<b>Total Placements</b>	<b>293</b>	<b>332</b>	<b>284</b>	<b>313</b>	<b>283</b>	<b>269</b>	<b>303</b>	<b>255</b>	<b>213</b>	<b>2,545</b>	<b>100%</b>
Domestic Violence	46	61	50	51	49	44	63	44	45	453	18%
Fire/Natural Disaster	3	0	2	1	3	2	1	7	2	21	1%
Evict: Condemnation	7	2	3	2	1	3	4	3	3	28	1%
Evict: Excused Conduct	2	7	1	1	0	0	2	1	0	14	1%
Evict: Foreclosure	0	2	1	3	0	1	0	1	0	8	<1%
Evict: Non Payment - Medical	0	0	1	1	0	0	0	0	0	2	<1%
Evict: Non Payment - Disability	1	3	1	0	0	0	0	0	0	5	<1%
Evict: Non Payment - Income Loss	22	29	29	34	19	23	17	13	11	197	8%
Evict: Non Renewal of Tenancy	1	1	0	9	7	3	6	4	3	34	1%
Threatened Evict - Unauthorized Tenant	7	10	9	24	20	23	18	23	18	152	6%
H&S: Violent Conduct	3	9	3	12	7	4	5	9	6	58	2%
H&S: Mental Illness	2	4	4	2	2	4	5	3	0	26	1%
H&S: Substance Abuse	0	0	1	2	0	0	1	4	0	8	<1%
H&S: Conditions in Unit	2	3	4	5	5	11	4	7	6	47	2%
H&S: Irregular Housing situation	138	137	119	119	114	95	129	95	70	1,016	40%
H&S: Not Meant for Human Habitation	42	45	47	42	41	47	42	29	38	373	15%
Aid Pending	6	11	2	1	7	4	1	7	5	44	2%
Replacement/TESI	11	8	7	4	8	5	5	5	6	59	2%
<b>Shelter and Hotel/Motel Exits</b>											
<b>Total</b>	<b>298</b>	<b>336</b>	<b>283</b>	<b>309</b>	<b>308</b>	<b>273</b>	<b>274</b>	<b>270</b>	<b>282</b>	<b>2,633</b>	<b>100%</b>
Abandoned	37	45	34	26	40	22	22	28	23	277	11%
Criminal Activity/Fraud	0	0	1	1	0	0	0	1	0	3	<1%
Feasible Alternative Housing with HB	177	205	178	215	212	193	189	176	176	1,721	65%
Feasible Alternative Housing without HB	27	40	30	32	34	35	34	27	38	297	11%
Ineligible	4	5	5	8	3	5	2	9	6	47	2%
No Show/Rejected Placement	1	1	2	2	1	1	1	4	4	17	<1%
NonCompliance/Termination for Cause	3	4	1	4	2	1	0	3	3	21	1%
Temporary Shelter Interruption	28	26	18	20	11	16	18	13	20	170	6%
Other/Unknown	21	10	14	1	5	0	8	9	12	80	3%



<b>Hotel/Motel Exits</b>	<b>Jul</b>	<b>Aug</b>	<b>Sept</b>	<b>Oct</b>	<b>Nov</b>	<b>Dec</b>	<b>Jan</b>	<b>Feb</b>	<b>Mar</b>	<b>YTD #</b>	<b>YTD %</b>
<b>Total Exits</b>	<b>1</b>	<b>1</b>	<b>2</b>	<b>2</b>	<b>1</b>	<b>1</b>	<b>2</b>	<b>0</b>	<b>1</b>	<b>11</b>	<b>100%</b>
Abandoned	0	0	0	2	0	0	0	0	0	2	18%
Criminal Activity	0	0	0	0	0	0	0	0	0	0	0%
Feasible Alternative Housing with HB	1	1	2	0	1	1	2	0	0	8	73%
Feasible Alternative Housing without HB	0	0	0	0	0	0	0	0	0	0	0%
Ineligible	0	0	0	0	0	0	0	0	0	0	0%
No Show/Rejected Placement	0	0	0	0	0	0	0	0	0	0	0%
NonCompliance/Termination for Cause	0	0	0	0	0	0	0	0	0	0	0%
Temporary Shelter Interruption	0	0	0	0	0	0	0	0	1	1	9%
Other/Unknown	0	0	0	0	0	0	0	0	0	0	0%
<b>Types of Subsidies at Exit</b>											
<b>Total Families Receiving Subsidies</b>	<b>205</b>	<b>227</b>	<b>196</b>	<b>232</b>	<b>232</b>	<b>213</b>	<b>210</b>	<b>197</b>	<b>199</b>	<b>1,911</b>	<b>100%</b>
ESG	2	1	1	0	0	1	0	3	2	10	<1%
HomeBASE	177	205	178	215	212	193	189	176	176	1,721	90%
HUD CoC	5	10	1	8	13	9	9	9	5	69	4%
MRVP	5	10	1	5	7	8	4	4	7	51	3%
Private Subsidized Housing	8	11	9	13	10	10	1	7	13	82	4%
Section 8 Mobile Voucher	66	87	88	93	90	84	96	78	89	771	40%
Section 8 Project-Based Voucher	10	9	4	15	14	10	13	8	10	93	5%
Other Public Housing	13	20	14	18	15	13	15	11	17	136	7%
Transportation	1	5	1	2	1	1	1	1	0	13	1%
<b>HomeBASE Entries (Diversion and Exits)</b>											
<b>Total</b>	<b>267</b>	<b>317</b>	<b>241</b>	<b>322</b>	<b>275</b>	<b>274</b>	<b>276</b>	<b>270</b>	<b>261</b>	<b>2,503</b>	<b>100%</b>
Berkshire Housing	11	3	3	6	1	3	1	2	3	33	1%
Community Teamwork, Inc.	15	37	32	24	28	20	14	28	27	225	9%
Franklin County	1	2	4	1	2	1	3	3	2	19	<1%
Housing Assistance Corp.	1	5	4	7	3	0	3	3	2	28	1%
Way Finders	59	64	53	65	70	66	48	51	52	528	21%
Metro Housing Boston	85	105	43935	121	72	93	105	92	86	44694	1786%
RCAP Solutions	8	7	3	10	11	10	8	10	12	79	3%
South Middlesex Opportunity Council	10	16	9	10	5	12	8	10	8	88	4%
NeighborWorks Housing Solutions	49	50	54	51	58	51	53	55	49	470	19%
Lynn Housing Authority	12	15	16	14	11	7	21	7	13	116	5%
Central MA Housing Alliance	17	13	8	13	14	11	12	9	7	104	4%

<b>HomeBASE Diversion by Region</b>	<b>Jul</b>	<b>Aug</b>	<b>Sept</b>	<b>Oct</b>	<b>Nov</b>	<b>Dec</b>	<b>Jan</b>	<b>Feb</b>	<b>Mar</b>	<b>YTD #</b>	<b>YTD %</b>
<b>Total</b>	<b>57</b>	<b>75</b>	<b>75</b>	<b>75</b>	<b>74</b>	<b>69</b>	<b>84</b>	<b>74</b>	<b>75</b>	<b>658</b>	<b>100%</b>
Berkshire Housing	2	1	1	2	1	2	1	1	1	12	2%
Community Teamwork, Inc.	3	16	13	7	16	10	12	19	14	110	17%
Franklin County	0	0	0	1	0	0	0	0	1	2	<1%
Housing Assistance Corp.	0	2	2	4	1	0	2	2	2	15	2%
Way Finders	20	24	23	25	25	22	26	18	25	208	32%
Metro Housing Boston	3	4	2	5	4	2	4	5	2	31	5%
RCAP Solutions	1	3	1	2	2	3	5	2	2	21	3%
South Middlesex Opportunity Council	1	0	0	0	0	1	1	0	2	5	<1%
NeighborWorks Housing Solutions	24	19	22	20	20	24	23	23	21	196	30%
Lynn Housing Authority	1	4	9	7	2	2	7	3	3	38	6%
Central MA Housing Alliance	3	2	1	2	3	3	3	1	2	20	3%
<b>HomeBASE Shelter Exits by Region</b>											
<b>Total</b>	<b>207</b>	<b>238</b>	<b>166</b>	<b>245</b>	<b>200</b>	<b>202</b>	<b>190</b>	<b>196</b>	<b>185</b>	<b>1,829</b>	<b>100%</b>
Berkshire Housing	9	2	2	4	0	1	0	1	2	21	1%
Community Teamwork, Inc.	12	21	19	17	12	10	2	9	13	115	6%
Franklin County	1	2	4	0	2	1	3	3	1	17	1%
Housing Assistance Corp.	1	3	2	3	2	0	1	1	0	13	1%
Way Finders	39	40	30	40	45	44	22	33	27	320	17%
Metro Housing Boston	79	97	52	114	67	88	100	87	83	767	42%
RCAP Solutions	7	4	2	8	9	7	3	8	10	58	3%
South Middlesex Opportunity Council	9	16	9	10	5	11	7	10	6	83	5%
NeighborWorks Housing Solutions	25	31	32	31	38	27	30	32	28	274	15%
Lynn Housing Authority	11	11	7	7	9	5	14	4	10	78	4%
Central MA Housing Alliance	14	11	7	11	11	8	8	8	5	83	5%
<b>HomeBASE Hotel Exits by Region</b>											
<b>Total</b>	<b>3</b>	<b>4</b>	<b>0</b>	<b>2</b>	<b>1</b>	<b>3</b>	<b>2</b>	<b>0</b>	<b>1</b>	<b>16</b>	<b>100%</b>
Berkshire Housing	0	0	0	0	0	0	0	0	0	0	0%
Community Teamwork, Inc.	0	0	0	0	0	0	0	0	0	0	0%
Franklin County	0	0	0	0	0	0	0	0	0	0	0%
Housing Assistance Corp.	0	0	0	0	0	0	0	0	0	0	0%
Way Finders	0	0	0	0	0	0	0	0	0	0	0%
Metro Housing Boston	3	4	Feb 20	2	1	3	1	0	1	15	94%
RCAP Solutions	0	0	0	0	0	0	0	0	0	0	0%
South Middlesex Opportunity Council	0	0	0	0	0	0	0	0	0	0	0%
NeighborWorks Housing Solutions	0	0	0	0	0	0	0	0	0	0	0%
Lynn Housing Authority	0	0	0	0	0	0	0	0	0	0	0%
Central MA Housing Alliance	0	0	0	0	0	0	1	0	0	1	6%
<b>EA Length of Stay</b>	<b>Jul</b>	<b>Aug</b>	<b>Sept</b>	<b>Oct</b>	<b>Nov</b>	<b>Dec</b>	<b>Jan</b>	<b>Feb</b>	<b>Mar</b>	<b>YTD #</b>	
Minimum Days	1	3	2	2	1	2	3	1	1	1	
Maximum Days	2,445	2,505	2,219	2,044	2,561	2,228	2,707	2,261	2,735	2,735	
Average Length of Stay	400	423	415	438	423	459	443	427	426	428	
Median Length of Stay	293	344	346	381	359	380	323	314	344	345	
<b>Families who Received Assistance at a Later Date</b>	<b>Jul</b>	<b>Aug</b>	<b>Sept</b>	<b>Oct</b>	<b>Nov</b>	<b>Dec</b>	<b>Jan</b>	<b>Feb</b>	<b>Mar</b>	<b>YTD #</b>	
Total Families	44	40	32	60	37	38	64	39	33	387	
Strategic Prevention	2	0	1	2	1	3	3	1	1	14	
HomeBASE Prevention and Diversion	21	18	13	35	20	17	32	19	16	191	
EA Shelter or Hotel	21	22	18	23	16	18	29	19	16	182	

<b>Families Entering EA Shelters/Hotels who Received HomeBASE during the 3 Previous Years</b>											
Number of Families	14	26	12	21	26	19	22	17	22	179	
Percentage of Shelter/Hotel Entries	5%	8%	4%	7%	9%	7%	7%	7%	10%	7%	
<b>Families who Applied for EA within 12 Months of HomeBASE Ending</b>											
	Jul	Aug	Sept	Oct	Nov	Dec	Jan	Feb	Mar	YTD #	YTD %
<b>Total Families</b>	<b>13</b>	<b>25</b>	<b>12</b>	<b>21</b>	<b>25</b>	<b>19</b>	<b>22</b>	<b>16</b>	<b>22</b>	<b>175</b>	<b>100%</b>
Domestic Violence	4	3	3	2	1	1	3	1	5	23	13%
Fire/Natural Disaster	0	0	0	0	0	0	0	1	0	1	1%
Evict: Condemnation	0	0	0	0	0	0	0	0	0	0	0%
Evict: Excused Conduct	0	1	0	0	0	0	0	0	0	1	1%
Evict: Foreclosure	1	0	1	0	0	0	0	0	0	2	1%
Evict: Non Payment - Medical	0	0	0	0	0	0	0	0	0	0	0%
Evict: Non Payment - Disability	0	2	0	0	0	0	0	0	0	2	1%
Evict: Non Payment - Income Loss	2	5	1	2	2	2	3	3	3	23	13%
Evict: Non Renewal of Tenancy	0	0	0	1	0	1	1	2	1	6	3%
Threatened Evict - Unauthorized Tenant	0	0	0	3	4	1	0	1	1	10	6%
H&S: Violent Conduct	0	2	1	1	0	0	0	0	0	4	2%
H&S: Mental Illness	0	0	0	0	0	1	0	0	0	1	1%
H&S: Substance Abuse	0	0	0	0	0	0	0	0	0	0	0%
H&S: Conditions in Unit	0	1	0	0	1	1	0	0	0	3	2%
H&S: Irregular Housing situation	4	6	4	5	14	8	9	6	6	62	35%
H&S: Not Meant for Human Habitation	2	3	1	6	1	4	5	0	4	26	15%
Other	0	2	1	1	2	0	1	2	2	11	6%
<b>Families Denied EA within 12 Months of HomeBASE Ending</b>											
	Jul	Aug	Sept	Oct	Nov	Dec	Jan	Feb	Mar	YTD #	YTD %
<b>Total Families</b>	<b>6</b>	<b>9</b>	<b>3</b>	<b>2</b>	<b>4</b>	<b>6</b>	<b>5</b>	<b>5</b>	<b>0</b>	<b>40</b>	<b>100%</b>
Application Not Completed	0	3	3	2	2	1	1	1	0	13	33%
No Qualifying Reason for Homelessness	1	1	0	0	0	2	2	2	0	8	20%
Over Income	2	3	0	0	0	2	1	1	0	9	23%
Received EA Benefit/Refused EA Placement within 12 Months	1	1	0	0	1	1	0	1	0	5	13%
Terminated Employment without Good Cause	0	0	0	0	0	0	1	0	0	1	3%
Terminated from HomeBASE within 24 months	2	1	0	0	1	0	0	0	0	4	10%

RAFT	Jul	Aug	Sept	Oct	Nov	Dec	Jan	Feb	Mar	YTD #	YTD %
<b>Total Applying</b>	<b>560</b>	<b>727</b>	<b>657</b>	<b>949</b>	<b>725</b>	<b>594</b>	<b>516</b>	<b>581</b>	<b>463</b>	<b>5,772</b>	
<b>Total Approved</b>	<b>468</b>	<b>690</b>	<b>636</b>	<b>872</b>	<b>683</b>	<b>560</b>	<b>485</b>	<b>543</b>	<b>418</b>	<b>5,355</b>	<b>100%</b>
Upstream rent arrears-public/subsidized	14	40	33	39	31	27	22	28	30	264	5%
Upstream rent arrears-market rent	17	60	75	96	70	65	49	85	63	580	11%
Upstream mortgage arrears	2	4	8	7	5	5	7	13	7	58	1%
Doubled up and asked to leave	154	175	178	230	206	185	150	155	91	1,524	28%
Domestic violence	14	10	6	26	10	14	12	13	11	116	2%
Eviction-public/subsidized	31	86	67	111	83	64	61	71	51	625	12%
Eviction-market rent	100	151	144	147	160	120	117	98	90	1,127	21%
Foreclosure	12	7	12	7	9	4	3	4	1	59	1%
Fire/flood/natural disaster	6	7	4	10	0	0	2	6	2	37	1%
Health/safety	45	31	29	46	34	31	24	33	32	305	6%
Overcrowding	9	10	4	9	10	4	9	10	10	75	1%
Utility shutoff	45	73	49	93	40	20	8	7	8	343	6%
Other	19	36	27	51	25	21	21	20	22	242	5%