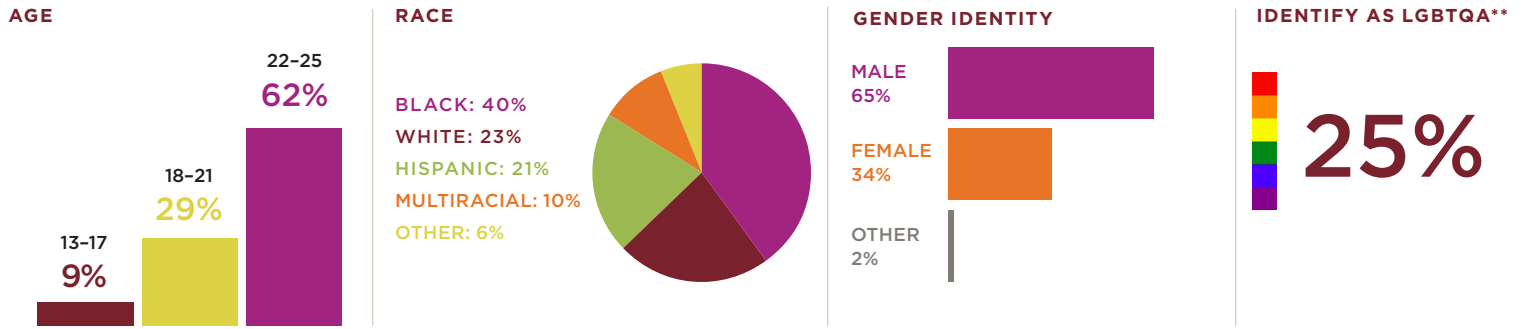


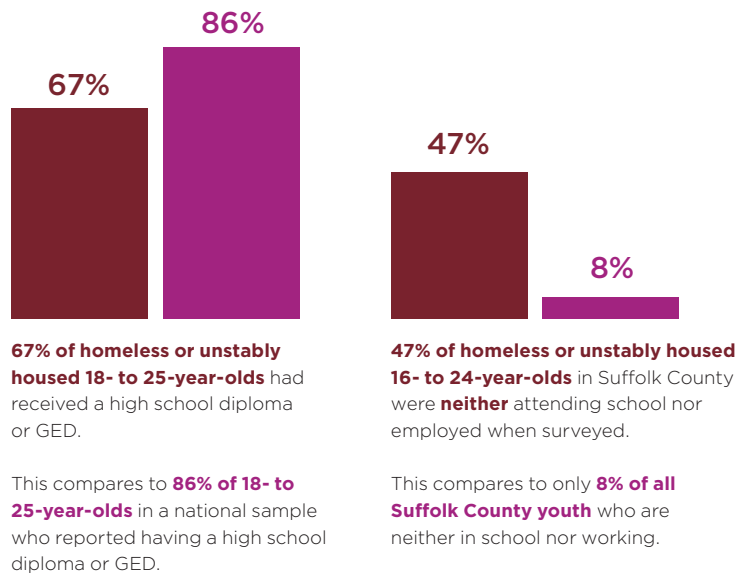
# Youth Experiencing Homelessness

Research conducted by Chapin Hall at the University of Chicago provides a broad and deep understanding of the youth who are homeless or unstably housed in our community. This data can help us craft local solutions so that all of our young people can be stably housed, in school and/or at work, contributing to our community, and reaching their full potential.

## SURVEY OF YOUTH EXPERIENCING HOMELESSNESS\*



## EDUCATION AND EMPLOYMENT

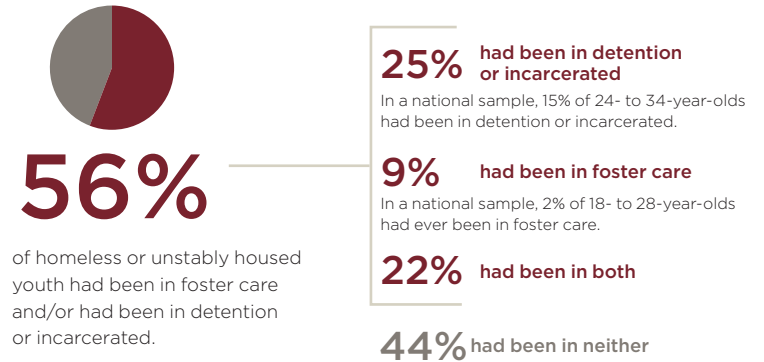


**25%** of homeless or unstably housed 18- to 25-year-olds were attending school when surveyed.

## PREGNANCY AND PARENTHOOD



## FOSTER CARE AND DETENTION OR INCARCERATION



## SURVEY OF RUNAWAY AND HOMELESS YOUTH PROVIDERS\*\*\*



\* In a 24-hour "point in time" count in the summer of 2016, 335 homeless youth were identified; 293 of them were surveyed.

\*\* Lesbian, gay, bisexual, transgender, questioning, or asexual.

\*\*\* Agencies were categorized as runaway and homeless youth providers if they indicated that they operated any programs specifically for runaway and homeless youth, regardless of whether those programs were federally funded.



[voicesofyouthcount.org](http://voicesofyouthcount.org)



Voices of Youth Count is a national policy research initiative of Chapin Hall at the University of Chicago. It is designed to link evidence and action to end youth homelessness. This research was made possible with generous support from Chapin Hall, Arcus Foundation, Ballmer Group Philanthropy, Campion Foundation, Casey Family Programs, Elton John AIDS Foundation, Liberty Mutual Foundation, Melville Charitable Trust, Raikes Foundation, and the US Department of Housing and Urban Development. Chapin Hall is solely responsible for the accuracy of the opinions, statements, and interpretations contained in this publication. They do not necessarily reflect the views of the government or any of Chapin Hall's other partners.