

DHCD EA Monthly Report, Statewide Summary

April 2019

EA Applications and Placements

EA Applications	Apr-19	Mar-19	YTD (#)
Families Applying for EA	554	545	6,186
Health & Safety Assessments Completed*	182	179	2,116
Families with Health & Safety Risk	159	155	1,829
Families Entering EA (Shelter, Motels, and HomeBASE)	346	333	3,619
Placement-to-Application Ratio	62%	61%	59%

Notes:

Families submitting more than one application during a month were counted once.

Families entering EA includes families entering shelter or hotels/motels and families diverted from shelter or hotels/motels into HomeBASE at the front door.

EA Placements	Apr-19		Mar-19		Year-to-Date	
	Number	Percent	Number	Percent	Number	Percent
Total Entering EA or HomeBASE	346	100%	333	100%	3,619	100%
Entering EA Shelter/Motels	276	80%	254	76%	2,755	76%
Presumptive Placements	23	7%	39	12%	361	10%
Shelters	272	79%	250	75%	2,733	76%
Motels	4	1%	4	1%	22	1%
HomeBASE Diversions (Front Door)	70	20%	79	24%	864	24%

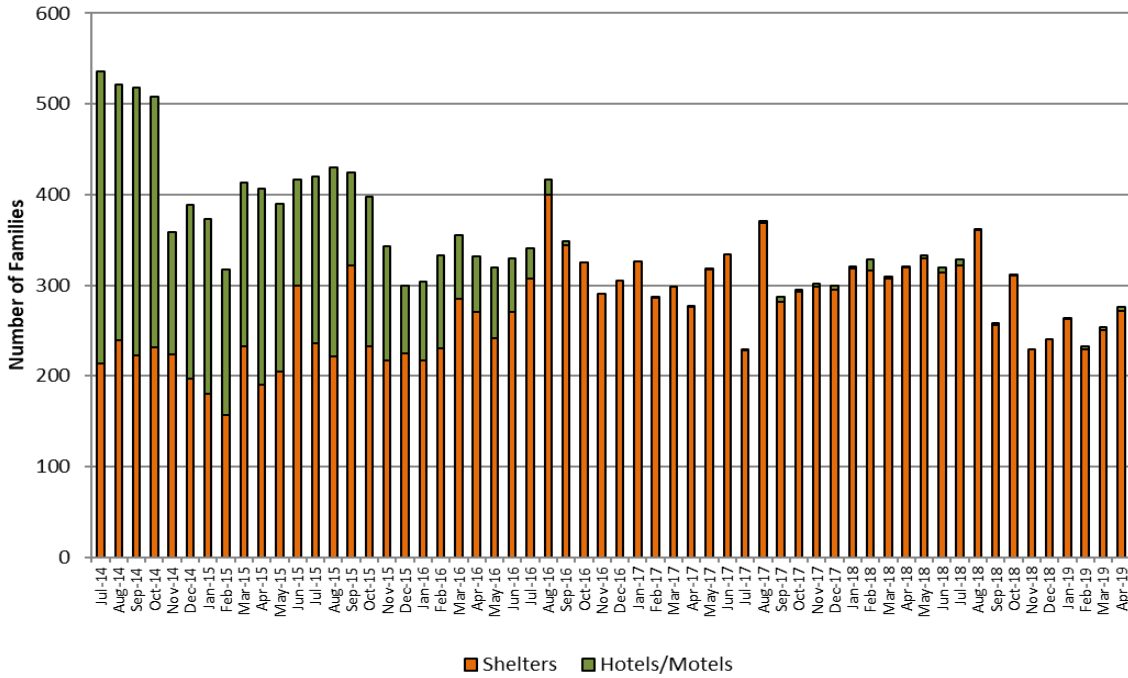
EA Shelter/Motels Placements, Reasons for Homelessness

	Apr-19		Mar-19		Year-to-Date	
	Number	Percent	Number	Percent	Number	Percent
Total	276	100%	254	100%	2,755	100%
Domestic Violence	48	17%	38	15%	437	16%
Fire/Natural Disaster	4	1%	4	2%	28	1%
Evict: Condemnation	6	2%	3	1%	51	2%
Evict: Excused Conduct	4	1%	5	2%	18	1%
Evict: Foreclosure	3	1%	0	0%	19	1%
Evict: Non Payment - Medical	0	0%	0	0%	2	<1%
Evict: Non Payment - Disability	1	<1%	1	<1%	7	<1%
Evict: Non Payment - Income Loss	22	8%	21	8%	238	9%
Evict: Non Renewal of Tenancy	0	0%	3	<1%	8	<1%
Threatened Evict - Unauthorized Tenant	1	0%	4	2%	55	2%
H&S: Violent Conduct	5	2%	4	2%	55	2%
H&S: Mental Illness	4	1%	1	<1%	30	1%
H&S: Substance Abuse	0	0%	4	2%	10	<1%
H&S: Conditions in Unit	2	1%	2	1%	36	1%
H&S: Irregular Housing situation	112	41%	116	46%	1,152	42%
H&S: Not Meant for Human Habitation	48	17%	36	14%	447	16%
TESI or Aid Pending	16	6%	12	5%	162	6%

Note: Families whose HomeBASE rental assistance benefit ended during the month may be placed in later months.

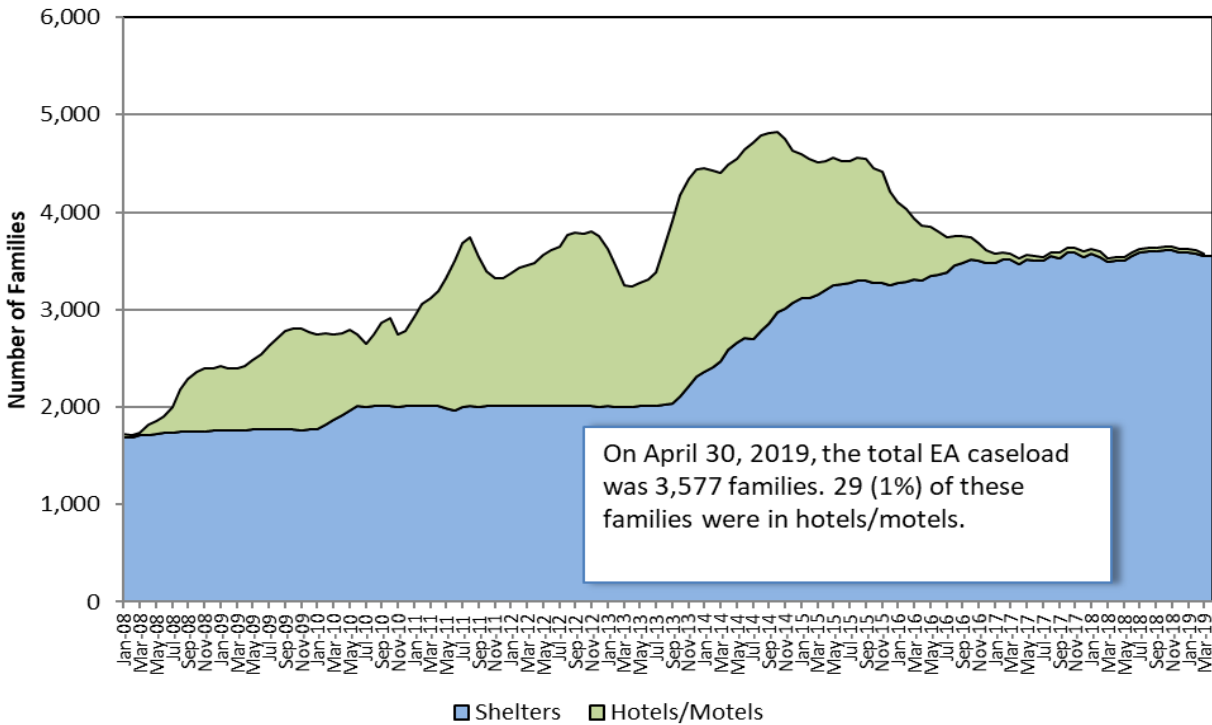
Sources: EA Daily Entry Reports and ASIST.

EA Shelter and Hotel/Motel Placements



EA Caseload

Average Daily EA Shelter & Hotel/Motel Caseload, Jan. 2008 - Apr. 2019



Note: Methodology for calculating shelter caseload changed in FY15 from an average daily number of contracted units (minus vacancies) to an end-of-the-month count of occupied shelter units using DHCD's bed registry.

EA Exits

Families Exiting Shelter and Hotels/Motels	Apr-19		Mar-19		Year-to-Date	
	Number	Percent	Number	Percent	Number	Percent
Total Exits	238	100%	279	100%	2,595	100%
Abandoned	32	13%	22	8%	373	14%
Criminal Activity	2	1%	0	0%	7	<1%
Feasible Alternative Housing with HB	142	60%	170	61%	1,433	55%
Feasible Alternative Housing without HB	34	14%	37	13%	322	12%
Ineligible	4	2%	4	1%	57	2%
Rejected Placement	0	0%	3	1%	17	1%
NonCompliance	5	2%	8	3%	58	2%
Temporary Shelter Interruption	19	8%	20	7%	245	9%
Other/Unknown	0	0%	15	5%	83	3%

Notes:

Families terminated from shelter for abandoning their placements or non-compliance may return to the system pending an appeal.
 Families receiving a Temporary Shelter Interruption may return to the system within 30 days.

Types of Subsidies	Apr-19		Mar-19		Year-to-Date	
	Number	Percent	Number	Percent	Number	Percent
Total Families Receiving Subsidies	161	100%	200	100%	1,728	100%
ESG	1	1%	4	2%	16	1%
HomeBASE	142	88%	170	85%	1,428	83%
HUD CoC	5	3%	8	4%	55	3%
MRVP	8	5%	5	3%	60	3%
Private Subsidized Housing	20	12%	17	9%	139	8%
Section 8 Mobile Voucher	14	9%	13	7%	112	6%
Section 8 Project-Based Voucher	6	4%	12	6%	87	5%
Other Public Housing	22	14%	18	9%	136	8%
Transportation	1	1%	2	1%	22	1%

Notes:

Families may receive multiple subsidy types. Therefore, the sum of the subsidy types do not equal the number of families.
 Data based on date of shelter/hotel exit. HomeBASE tracker data based on the date that checks are issued may vary.

RAFT - Homelessness Prevention

RAFT	Apr-19		Mar-19		Year-to-Date	
	Number	Percent	Number	Percent	Number	Percent
Families Applying	722		664		7,508	
Families Approved	673	100%	547	100%	6,271	100%
Asked to Leave	220	33%	176	32%	2,082	33%
Domestic Violence	17	3%	16	3%	167	3%
Eviction (Private)	138	21%	152	28%	1,647	26%
Eviction (Public/Subsidized Housing)	132	20%	83	15%	1,046	17%
Fire/Flood/Natural Disaster	21	3%	16	3%	104	2%
Foreclosure	10	1%	5	1%	79	1%
Health and Safety	35	5%	29	5%	230	4%
Severe Overcrowding	16	2%	18	3%	105	2%
Utility Shut-Off	40	6%	12	2%	461	7%
Other Crisis	44	7%	40	7%	350	6%

Expenditures

Expenditure Type	Apr-19	FY19 YTD	FY19 Budget	Percent Spent FY19 YTD
Emergency Assistance	\$14,363,950	\$159,767,850	\$176,492,318	91%
HomeBASE	\$1,763,903	\$20,762,145	\$27,300,000	76%
RAFT	\$2,022,231	\$18,003,737	\$20,000,000	90%

Note:

Spending data are estimates since monthly invoicing was not complete at time of reporting.

RAFT budget and spending estimates include set aside for homeless individuals.

**DHCD - EA Monthly Report
April 2019**

	Apr #	Apr %	Mar #	YTD	YTD (%)
Families Applying for EA					
Total	554	100%	545	6,186	100%
Boston	133	24%	125	1,298	21%
Central Mass	60	11%	45	588	10%
North Shore	150	27%	153	1,890	31%
South Shore	93	17%	92	948	15%
Western Mass	118	21%	130	1,462	24%
Families Placed in EA Shelter and Hotels/Motels					
Total	276	100%	254	2,755	100%
Boston	114	41%	81	989	36%
Central Mass	28	10%	25	263	10%
North Shore	50	18%	58	533	19%
South Shore	36	13%	38	441	16%
Western Mass	48	17%	52	529	19%
Average Daily Number of Families in Motels					
Statewide Average	30	100%	30	33	100%
Boston	16	53%	15	19	56%
Central Mass	2	7%	3	3	9%
North Shore	10	33%	10	9	28%
South Shore	1	3%	1	1	3%
Western Mass	1	3%	1	1	4%
HomeBASE Entries (Diversion and Exits)					
Total	245	100%	199	2,398	100%
Berkshire	3	1%	2	29	1%
CTI	30	12%	29	317	13%
FCRHRA	6	2%	0	28	1%
HAC	5	2%	4	35	1%
WF	50	20%	57	555	23%
MBHP	62	25%	30	404	17%
RCAP	11	4%	6	118	5%
SMOC	4	2%	6	66	3%
HSSEMA	49	20%	39	593	25%
LHAND	13	5%	16	119	5%
CMHA	12	5%	10	134	6%

Notes

Average Daily Number of Families in Hotels is calculated as the average across weekly point-in-time estimates from the reported month; Hotel region indicates region of originating eligibility office.

Totals may not equal the sum or regions due to rounding.

Sources: EA Daily Entry Report, ASIST, and EA Weekly Motel Reports.

DHCD - EA Monthly Report, Cumulative Data
April 2019

	Current Month		Jul	Aug	Sep	Oct	Nov	Dec	Jan	Feb	Mar	FY19	
	Apr #	Apr %										YTD #	YTD %
Families Applying for EA	554	100%	753	797	663	660	578	480	640	516	545	6,186	100%
Boston	133	24%	155	155	151	149	107	83	136	104	125	1,298	21%
Central Mass	60	11%	73	96	52	49	46	53	59	55	45	588	10%
North Shore	150	27%	234	258	203	199	184	148	199	162	153	1,890	31%
South Shore	93	17%	121	109	103	107	85	69	98	71	92	948	15%
Western Mass	118	21%	170	179	154	156	156	127	148	124	130	1,462	24%
Health & Safety Assessment													
H&S Assessment Completed	182	100%	218	285	240	249	213	151	220	179	179	2,116	100%
Families with H&S Risk	159	87%	187	247	208	206	181	137	199	150	155	1,829	86%
Families Placed in Shelter/Motels													
Total	276	100%	328	362	258	312	229	240	264	232	254	2,755	100%
Families Placed in Hotels/Motels	4	1%	6	1	2	1	0	0	1	3	4	22	1%
Presumptive Placement	23	8%	55	58	38	35	27	23	29	34	39	361	13%
Boston	114	41%	119	134	101	114	82	74	87	83	81	989	36%
Central Mass	28	10%	36	38	29	18	17	24	27	21	25	263	10%
North Shore	50	18%	65	63	37	66	48	49	52	45	58	533	19%
South Shore	36	13%	46	66	50	48	38	42	39	38	38	441	16%
Western Mass	48	17%	62	61	41	66	44	51	59	45	52	529	19%
Monthly Caseload (# of Families)	04/30/19		7/31/2018	8/31/2018	9/30/2018	10/31/2018	11/30/2018	12/31/2018	1/31/2019	02/28/19	03/31/19		
Total	3,577	100%	3,616	3,636	3,630	3,647	3,646	3,622	3,617	3,607	3,575	3,617	100%
Shelter	3,548	99%	3,581	3,600	3,592	3,610	3,614	3,591	3,587	3,577	3,547	3,585	99%
Hotel/Motel	29	1%	35	36	38	37	32	31	30	30	28	33	1%
Average Number of Families in Motels													
Statewide Average	30	100%	33	36	37	38	34	32	31	30	30	33	100%
Boston	16	53%	18	22	23	22	19	18	17	15	15	19	56%
Central Mass	2	7%	3	3	3	3	3	3	3	3	3	3	9%
North Shore	10	33%	9	9	9	11	10	9	8	9	10	9	28%
South Shore	1	3%	2	1	1	1	1	1	1	1	1	1	3%
Western Mass	1	3%	1	1	1	1	1	1	2	2	1	1	4%
Placement to Application Ratio	62%		52%	54%	51%	61%	56%	70%	59%	65%	61%	59%	

Types of Subsidies at Exit	Apr #	Apr %	Jul	Aug	Sep	Oct	Nov	Dec	Jan	Feb	Mar	YTD #	YTD %
Total Families Receiving Subsidies	161	100%	149	189	162	180	164	176	165	182	200	1,728	100%
ESG	1	1%	2	0	3	0	1	2	0	3	4	16	1%
HomeBASE	142	88%	136	159	132	152	134	143	129	131	170	1,428	83%
HUD CoC	5	3%	5	3	5	8	7	4	5	5	8	55	3%
MRVP	8	5%	4	5	4	6	7	5	4	12	5	60	3%
Private Subsidized Housing	20	12%	13	13	14	12	10	13	13	14	17	139	8%
Section 8 Mobile Voucher	14	9%	16	10	9	10	10	12	8	10	13	112	6%
Section 8 Project-Based Voucher	6	4%	5	7	9	10	5	11	10	12	12	87	5%
Other Public Housing	22	14%	5	17	7	10	14	11	18	14	18	136	8%
Transportation	1	1%	4	1	2	2	0	3	2	5	2	22	1%
HomeBASE Entries (Diversion and Exits)													
Total	245	100%	193	257	221	257	242	255	271	258	199	2,398	100%
Berkshire	3	1%	8	1	1	5	2	5	0	2	2	29	1%
CTI	30	12%	13	40	34	33	29	29	37	43	29	317	13%
FCRHRA	6	2%	1	4	4	2	3	5	0	3	0	28	1%
HAC	5	2%	1	2	1	1	7	7	5	2	4	35	1%
WF	50	20%	48	53	34	73	47	72	58	63	57	555	23%
MBHP	62	25%	35	41	39	39	34	39	44	41	30	404	17%
RCAP	11	4%	13	19	11	12	13	15	3	15	6	118	5%
SMOC	4	2%	4	7	4	6	7	8	12	8	6	66	3%
HSSEMA	49	20%	47	70	62	57	74	56	86	53	39	593	25%
LHAND	13	5%	12	8	11	17	8	8	9	17	16	119	5%
CMHA	12	5%	11	12	20	12	18	11	17	11	10	134	6%
HomeBASE Diversion by Region													
Total	70	100%	62	72	83	91	92	94	116	105	79	864	100%
Berkshire	1	1%	6	0	0	0	0	1	0	2	0	10	1%
CTI	21	30%	10	18	20	18	19	20	19	30	17	192	22%
FCRHRA	1	1%	0	2	0	0	2	3	0	0	0	8	1%
HAC	4	6%	1	0	0	0	5	1	3	2	3	19	2%
WF	13	19%	19	14	19	28	23	31	31	29	20	227	26%
MBHP	3	4%	1	3	2	2	6	6	8	4	4	39	5%
RCAP	2	3%	4	3	0	3	2	7	1	5	1	28	3%
SMOC	0	0%	0	0	1	0	1	1	2	1	2	8	1%
HSSEMA	18	26%	16	26	32	26	28	21	44	20	19	250	29%
LHAND	5	7%	0	3	5	10	4	1	7	9	11	55	6%
CMHA	2	3%	5	3	4	4	2	2	1	3	2	28	3%

HomeBASE Shelter Exits by Region													
	Apr #	Apr %	Jul	Aug	Sep	Oct	Nov	Dec	Jan	Feb	Mar	YTD #	YTD %
Total	170	100%	130	183	138	166	149	159	154	152	119	1,520	100%
Berkshire	2	1%	2	1	1	5	2	4	0	0	2	19	1%
CTI	9	5%	3	22	14	15	10	9	18	13	12	125	8%
FCRHRA	5	3%	1	2	4	2	1	2	0	3	0	20	1%
HAC	1	1%	0	2	1	1	2	6	2	0	1	16	1%
WF	37	22%	28	38	15	45	24	41	27	34	37	326	21%
MBHP	54	32%	34	38	37	37	27	31	36	36	25	355	23%
RCAP	9	5%	9	16	11	9	11	8	2	10	5	90	6%
SMOC	4	2%	4	7	3	6	6	7	10	7	4	58	4%
HSSEMA	31	18%	31	43	30	31	46	35	42	33	20	342	23%
LHAND	8	5%	12	5	6	7	4	7	2	8	5	64	4%
CMHA	10	6%	6	9	16	8	16	9	15	8	8	105	7%
HomeBASE Hotel Exits by Region													
Total	5	100%	1	2	0	0	1	2	1	1	1	14	100%
Berkshire	0	0%	0	0	0	0	0	0	0	0	0	0	0%
CTI	0	0%	0	0	0	0	0	0	0	0	0	0	0%
FCRHRA	0	0%	0	0	0	0	0	0	0	0	0	0	0%
HAC	0	0%	0	0	0	0	0	0	0	0	0	0	0%
WF	0	0%	1	1	0	0	0	0	0	0	0	2	14%
MBHP	5	100%	0	0	0	0	1	2	0	1	1	10	71%
RCAP	0	0%	0	0	0	0	0	0	0	0	0	0	0%
SMOC	0	0%	0	0	0	0	0	0	0	0	0	0	0%
HSSEMA	0	0%	0	1	0	0	0	0	0	0	0	1	7%
LHAND	0	0%	0	0	0	0	0	0	0	0	0	0	0%
CMHA	0	0%	0	0	0	0	0	0	1	0	0	1	7%
RAFT													
Total Applying	722		337	630	808	1,076	737	743	906	885	664	7,508	
Total Approved	673	100%	254	542	659	929	647	617	739	664	547	6,271	100%
Asked to Leave	220	33%	75	162	202	345	214	209	251	228	176	2,082	33%
Domestic Violence	17	3%	6	14	25	35	15	13	7	19	16	167	3%
Eviction (Private)	138	21%	70	142	148	224	165	190	221	197	152	1,647	26%
Eviction (Public/Subsidized Housing)	132	20%	40	69	126	130	111	103	150	102	83	1,046	17%
Fire/Flood/Natural Disaster	21	3%	2	10	11	12	4	7	10	11	16	104	2%
Foreclosure	10	1%	2	6	5	16	10	8	13	4	5	79	1%
Health and Safety	35	5%	7	14	15	30	14	21	33	32	29	230	4%
Severe Overcrowding	16	2%	8	9	10	13	10	4	10	7	18	105	2%
Utility Shut-Off	40	6%	34	84	84	87	77	23	9	11	12	461	7%
Other Crisis	44	7%	10	32	33	37	27	39	35	53	40	350	6%