

DHCD EA Monthly Report, Statewide Summary

August 2018

EA Applications and Placements

EA Applications	Aug-18	Jul-18	YTD (#)
Families Applying for EA	797	753	1,550
Health & Safety Assessments Completed*	37	218	255
Families with Health & Safety Risk	31	187	218
Families Entering EA (Shelter, Motels, and HomeBASE)	441	385	826
Placement-to-Application Ratio	55%	51%	53%

Notes:

Families submitting more than one application during a month were counted once.

Families entering EA includes families entering shelter or hotels/motels and families diverted from shelter or hotels/motels into HomeBASE at the front door.

*Data for 234 families referred in August were not available at time of reporting.

EA Placements	Aug-18		Jul 0218		Year-to-Date	
	Number	Percent	Number	Percent	Number	Percent
Total Entering EA or HomeBASE	441	100%	385	100%	826	100%
Entering EA Shelter/Motels	362	82%	328	85%	690	85%
Presumptive Placements	58	13%	55	14%	113	14%
Shelters	361	82%	322	84%	683	84%
Motels	1	0%	6	2%	7	2%
HomeBASE Diversions (Front Door)	79	18%	57	15%	136	16%

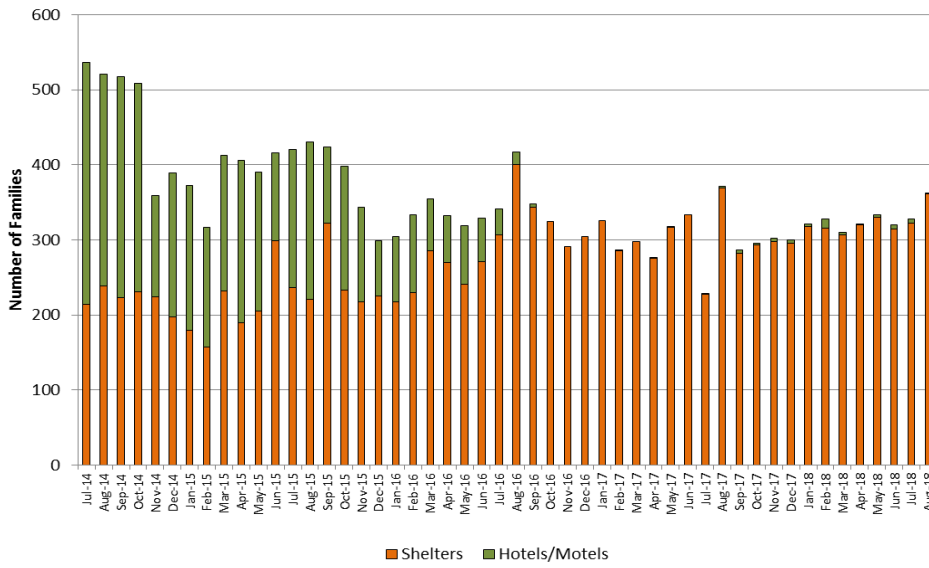
EA Shelter/Motels Placements, Reasons for Homelessness

	Aug-18		Jul-18		Year-to-Date	
	Number	Percent	Number	Percent	Number	Percent
Total	362	100%	328	100%	690	100%
Domestic Violence	62	17%	45	14%	107	16%
Fire/Natural Disaster	4	1%	5	2%	9	1%
Evict: Condemnation	5	1%	4	1%	9	1%
Evict: Excused Conduct	2	1%	0	0%	2	<1%
Evict: Foreclosure	4	1%	3	1%	7	1%
Evict: Non Payment - Medical	0	0%	0	0%	0	0%
Evict: Non Payment - Disability	2	1%	0	0%	2	<1%
Evict: Non Payment - Income Loss	33	9%	28	9%	61	9%
Evict: Non Renewal of Tenancy	1	<1%	2	1%	3	<1%
Threatened Evict - Unauthorized Tenant	7	2%	8	2%	15	2%
H&S: Violent Conduct	9	2%	8	2%	17	2%
H&S: Mental Illness	5	<1%	1	<1%	6	1%
H&S: Substance Abuse	1	<1%	0	0%	1	<1%
H&S: Conditions in Unit	0	0%	7	2%	7	1%
H&S: Irregular Housing situation	139	38%	133	41%	272	39%
H&S: Not Meant for Human Habitation	63	17%	68	21%	131	19%
TESI or Aid Pending	25	7%	16	5%	41	6%

Note: Families whose HomeBASE rental assistance benefit ended during the month may be placed in later months.

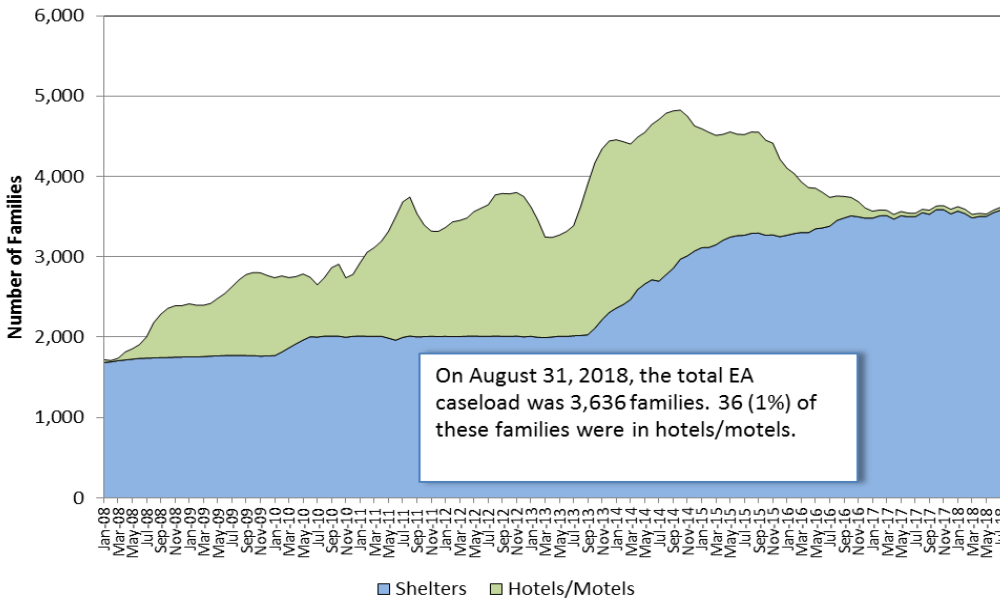
Sources: EA Daily Entry Reports and ASIST.

EA Shelter and Hotel/Motel Placements



EA Caseload

Average Daily EA Shelter & Hotel/Motel Caseload, Jan. 2008 - Aug. 2018



Note: Methodology for calculating shelter caseload changed in FY15 from an average daily number of contracted units (minus vacancies) to an end-of-the-month count of occupied shelter units using DHCD's bed registry.

EA Exits

Families Exiting Shelter and Hotels/Motels	Aug-18		Jul-18		Year-to-Date	
	Number	Percent	Number	Percent	Number	Percent
Total Exits	307	100%	268	100%	575	100%
Abandoned	68	22%	65	24%	133	23%
Criminal Activity	1	<1%	0	0%	1	0%
Feasible Alternative Housing with HB	159	52%	123	46%	282	49%
Feasible Alternative Housing without HB	30	10%	29	11%	59	10%
Ineligible	9	3%	8	3%	17	3%
Rejected Placement	3	1%	2	1%	5	1%
NonCompliance	2	1%	4	1%	6	1%
Temporary Shelter Interruption	31	10%	31	12%	62	11%
Other/Unknown	4	1%	6	2%	10	2%

Notes:
 Families terminated from shelter for abandoning their placements or non-compliance may return to the system pending an appeal.
 Families receiving a Temporary Shelter Interruption may return to the system within 30 days.

Types of Subsidies	Aug-18		Jul-18		Year-to-Date	
	Number	Percent	Number	Percent	Number	Percent
Total Families Receiving Subsidies	189	100%	149	100%	338	100%
ESG	0	0%	2	1%	2	1%
HomeBASE	159	84%	136	91%	295	87%
HUD CoC	3	2%	5	3%	8	2%
MRVP	5	3%	4	3%	9	3%
Private Subsidized Housing	13	7%	13	9%	26	8%
Section 8 Mobile Voucher	10	5%	16	11%	26	8%
Section 8 Project-Based Voucher	7	4%	5	3%	12	4%
Other Public Housing	17	9%	5	3%	22	7%
Transportation	1	1%	4	3%	5	1%

Notes:
 Families may receive multiple subsidy types. Therefore, the sum of the subsidy types do not equal the number of families.
 Data based on date of shelter/hotel exit. HomeBASE tracker data based on the date that checks are issued may vary.

Expenditures

Expenditure Type	Aug-18	FY19 YTD	FY19 Budget	Percent Spent FY19 YTD
Emergency Assistance	\$14,984,865	\$29,922,353	\$161,745,706	18%
HomeBASE	\$3,170,441	\$4,847,683	\$32,000,000	15%
RAFT	\$2,821,433	\$4,232,150	\$20,000,000	21%

Note:

Spending data are estimates since monthly invoicing was not complete at time of reporting.

RAFT budget and spending estimates include set aside for homeless individuals.

**DHCD - EA Monthly Report
August 2018**

	Aug #	Aug %	Jul #	YTD	YTD (%)
Families Applying for EA					
Total	797	100%	753	1,550	100%
Boston	155	19%	155	310	55%
Central Mass	96	12%	73	169	159%
North Shore	258	32%	234	492	74%
South Shore	109	14%	121	230	113%
Western Mass	179	22%	170	349	0%
Families Placed in EA Shelter and Hotels/Motels					
Total	362	100%	328	690	100%
Boston	134	37%	119	253	37%
Central Mass	38	10%	36	74	11%
North Shore	63	17%	65	128	19%
South Shore	66	18%	46	112	16%
Western Mass	61	17%	62	123	18%
Average Daily Number of Families in Motels					
Statewide Average	36	100%	33	35	100%
Boston	22	61%	18	20	58%
Central Mass	3	8%	3	3	9%
North Shore	9	25%	9	9	26%
South Shore	1	3%	2	2	4%
Western Mass	1	3%	1	1	3%
HomeBASE Entries (Diversion and Exits)					
Total	255	100%	195	450	100%
Berkshire	1	<1%	4	5	1%
CTI	41	16%	14	55	12%
FCRHRA	4	2%	0	4	1%
HAC	1	0%	2	3	1%
WF	52	20%	48	100	22%
MBHP	43	17%	36	79	18%
RCAP	19	7%	12	31	7%
SMOC	5	2%	8	13	3%
HSSEMA	69	27%	50	119	26%
LHAND	8	3%	12	20	4%
CMHA	12	5%	9	21	5%

Notes

Average Daily Number of Families in Hotels is calculated as the average across weekly point-in-time estimates from the reported month; Hotel region indicates region of originating eligibility office.

Totals may not equal the sum or regions due to rounding.

Sources: EA Daily Entry Report, ASIST, and EA Weekly Motel Reports.

**DHCD - EA Monthly Report, Cumulative Data
August 2018**

	Current Month		Jul	FY19	
	Aug #	Aug %		YTD #	YTD %
Families Applying for EA	797	100%	753	1,550	100%
Boston	155	19%	155	310	55%
Central Mass	96	12%	73	169	159%
North Shore	258	32%	234	492	74%
South Shore	109	14%	121	230	113%
Western Mass	179	22%	170	349	0%
Health & Safety Assessment					
H&S Assessment Completed	37	100%	218	255	100%
Families with H&S Risk	31	84%	187	218	85%
Families Placed in Shelter/Motels					
Total	362	100%	328	690	100%
Families Placed in Motels	1	<1%	6	7	1%
Presumptive Placement	58	16%	55	113	16%
Boston	134	37%	119	253	37%
Central Mass	38	10%	36	74	11%
North Shore	63	17%	65	128	19%
South Shore	66	18%	46	112	16%
Western Mass	61	17%	62	123	18%
Monthly Caseload (# of Families)	08/31/18		7/31/2018		
Total	3,636	100%	3,616	3,626	100%
Shelter	3,600	99%	3,581	3,591	99%
Hotel/Motel	36	1%	35	36	1%
Average Number of Families in Motels					
Statewide Average	36	100%	33	35	100%
Boston	22	61%	18	20	58%
Central Mass	3	8%	3	3	9%
North Shore	9	25%	9	9	26%
South Shore	1	3%	2	2	4%
Western Mass	1	3%	1	1	3%
Placement to Application Ratio	55%		51%	53%	

	Aug #	Aug %	Jul	YTD #	YTD %
Reasons for Homelessness, Shelter/Motels					
Total	362	100%	328	690	100%
Domestic Violence	62	17%	45	107	16%
Fire/Natural Disaster	4	1%	5	9	1%
Evict: Condemnation	5	1%	4	9	1%
Evict: Excused Conduct	2	1%	0	2	<1%
Evict: Foreclosure	4	1%	3	7	1%
Evict: Non Payment - Medical	0	0%	0	0	0%
Evict: Non Payment - Disability	2	1%	0	2	<1%
Evict: Non Payment - Income Loss	33	9%	28	61	9%
Evict: Non Renewal of Tenancy	1	<1%	2	3	<1%
Threatened Evict - Unauthorized Tenant	7	2%	8	15	2%
H&S: Violent Conduct	9	2%	8	17	2%
H&S: Mental Illness	5	<1%	1	6	1%
H&S: Substance Abuse	1	<1%	0	1	<1%
H&S: Conditions in Unit	0	0%	7	7	1%
H&S: Irregular Housing situation	139	38%	133	272	39%
H&S: Not Meant for Human Habitation	63	17%	68	131	19%
Aid Pending	11	3%	9	20	3%
Replacement/TESI	14	4%	7	21	3%
Shelter and Hotel/Motel Exits					
Total	307	100%	268	575	100%
Abandoned	68	22%	65	133	23%
Criminal Activity/Fraud	1	<1%	0	1	0%
Feasible Alternative Housing with HB	159	52%	123	282	49%
Feasible Alternative Housing without HB	30	10%	29	59	10%
Ineligible	9	3%	8	17	3%
No Show/Rejected Placement	3	1%	2	5	1%
NonCompliance/Termination for Cause	2	1%	4	6	1%
Temporary Shelter Interruption	31	10%	31	62	11%
Other/Unknown	4	1%	6	10	2%
Hotel/Motel Exits					
Total	3	100%	3	6	100%
Abandoned	1	33%	1	2	33%
Criminal Activity	0	0%	0	0	0%
Feasible Alternative Housing with HB	2	67%	2	4	67%
Feasible Alternative Housing without HB	0	0%	0	0	0%
Ineligible	0	0%	0	0	0%
No Show/Rejected Placement	0	0%	0	0	0%
NonCompliance/Termination for Cause	0	0%	0	0	0%
Temporary Shelter Interruption	0	0%	0	0	0%
Other/Unknown	0	0%	0	0	0%

	Aug #	Aug %	Jul	YTD #	YTD %
Types of Subsidies at Exit					
Total Families Receiving Subsidies	189	100%	149	338	100%
ESG	0	0%	2	2	1%
HomeBASE	159	84%	136	295	87%
HUD CoC	3	2%	5	8	2%
MRVP	5	3%	4	9	3%
Private Subsidized Housing	13	7%	13	26	8%
Section 8 Mobile Voucher	10	5%	16	26	8%
Section 8 Project-Based Voucher	7	4%	5	12	4%
Other Public Housing	17	9%	5	22	7%
Transportation	1	1%	4	5	1%
HomeBASE Entries (Diversion and Exits)					
Total	255	100%	195	450	100%
Berkshire	1	<1%	4	5	1%
CTI	41	16%	14	55	12%
FCRHRA	4	2%	0	4	1%
HAC	1	0%	2	3	1%
WF	52	20%	48	100	22%
MBHP	43	17%	36	79	18%
RCAP	19	7%	12	31	7%
SMOC	5	2%	8	13	3%
HSSEMA	69	27%	50	119	26%
LHAND	8	3%	12	20	4%
CMHA	12	5%	9	21	5%
HomeBASE Diversion by Region					
Total	79	100%	57	136	100%
Berkshire	0	0%	3	3	2%
CTI	21	27%	9	30	22%
FCRHRA	2	3%	0	2	1%
HAC	0	0%	1	1	1%
WF	14	18%	21	35	26%
MBHP	5	6%	1	6	4%
RCAP	4	5%	3	7	5%
SMOC	0	0%	0	0	0%
HSSEMA	27	34%	17	44	32%
LHAND	3	4%	0	3	2%
CMHA	3	4%	2	5	4%

	Aug #	Aug %	Jul	YTD #	YTD %
HomeBASE Shelter Exits by Region					
Total	176	100%	135	311	100%
Berkshire	1	1%	1	2	1%
CTI	20	11%	5	25	8%
FCRHRA	2	1%	0	2	1%
HAC	1	1%	1	2	1%
WF	38	22%	27	65	21%
MBHP	38	22%	33	71	23%
RCAP	15	9%	9	24	8%
SMOC	5	3%	7	12	4%
HSSEMA	42	24%	33	75	24%
LHAND	5	3%	12	17	5%
CMHA	9	5%	7	16	5%
HomeBASE Hotel Exits by Region					
Total	0		3	3	100%
Berkshire	0		0	0	0%
CTI	0		0	0	0%
FCRHRA	0		0	0	0%
HAC	0		0	0	0%
WF	0		0	0	0%
MBHP	0		2	2	67%
RCAP	0		0	0	0%
SMOC	0		1	1	33%
HSSEMA	0		0	0	0%
LHAND	0		0	0	0%
CMHA	0		0	0	0%