

DHCD EA Monthly Report, Statewide Summary

January 2018

EA Applications and Placements

EA Applications	Jan-18	Dec-17	YTD (#)
Families Applying for EA	713	544	4,875
Health & Safety Assessments Completed*	27	211	1,532
Families with Health & Safety Risk	25	180	1,360
Families Entering EA (Shelter, Motels, and HomeBASE)	423	406	2,862
Placement-to-Application Ratio	59%	75%	59%

Notes:

Families submitting more than one application during a month were counted once.

Families entering EA includes families entering shelter or hotels/motels and families diverted from shelter or hotels/motels into HomeBASE at the front door.

*Data for 243 families referred in January were not available at time of reporting.

EA Placements	Jan-18		Dec-17		Year-to-Date	
	Number	Percent	Number	Percent	Number	Percent
Total Entering EA or HomeBASE	423	100%	406	100%	2,862	100%
Entering EA Shelter/Motels	321	76%	300	74%	2,175	76%
Presumptive Placements	32	8%	40	10%	275	10%
Shelters	318	75%	295	73%	2,153	75%
Motels	3	1%	5	1%	22	1%
HomeBASE Diversions (Front Door)	102	24%	106	26%	687	24%

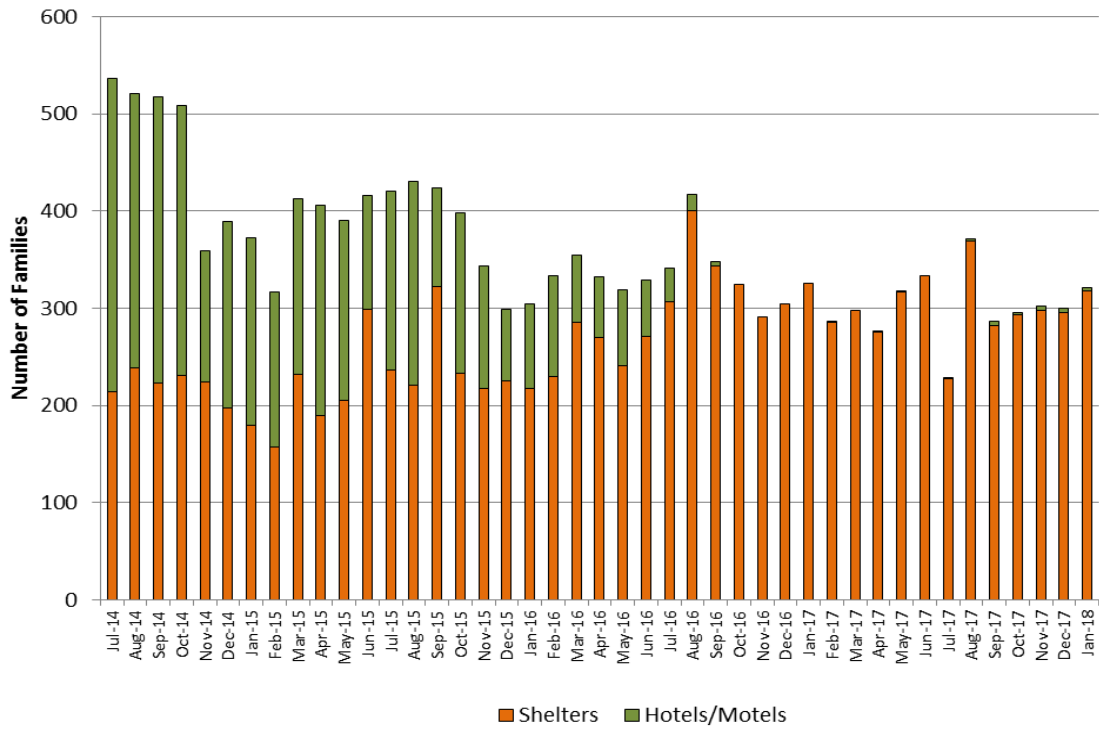
EA Shelter/Motels Placements, Reasons for Homelessness

	Jan-18		Dec-17		Year-to-Date	
	Number	Percent	Number	Percent	Number	Percent
Total	321	100%	300	100%	2,175	100%
Domestic Violence	47	15%	46	15%	322	15%
Fire/Natural Disaster	3	1%	6	2%	16	1%
Evict: Condemnation	12	4%	3	1%	33	2%
Evict: Excused Conduct	1	<1%	0	0%	7	<1%
Evict: Foreclosure	0	0%	1	<1%	12	1%
Evict: Non Payment - Medical	0	0%	0	0%	2	<1%
Evict: Non Payment - Disability	0	0%	0	0%	8	<1%
Evict: Non Payment - Income Loss	35	11%	27	9%	181	8%
Evict: Non Renewal of Tenancy	2	1%	0	0%	16	1%
Threatened Evict - Unauthorized Tenant	11	3%	8	3%	92	4%
H&S: Violent Conduct	12	4%	7	2%	57	3%
H&S: Mental Illness	1	<1%	2	1%	17	1%
H&S: Substance Abuse	1	<1%	3	1%	14	1%
H&S: Conditions in Unit	6	2%	7	2%	41	2%
H&S: Irregular Housing situation	131	41%	106	35%	842	39%
H&S: Not Meant for Human Habitation	41	13%	65	22%	379	17%
TESI or Aid Pending	18	6%	19	6%	136	6%

Note: Families whose HomeBASE rental assistance benefit ended during the month may be placed in later months.

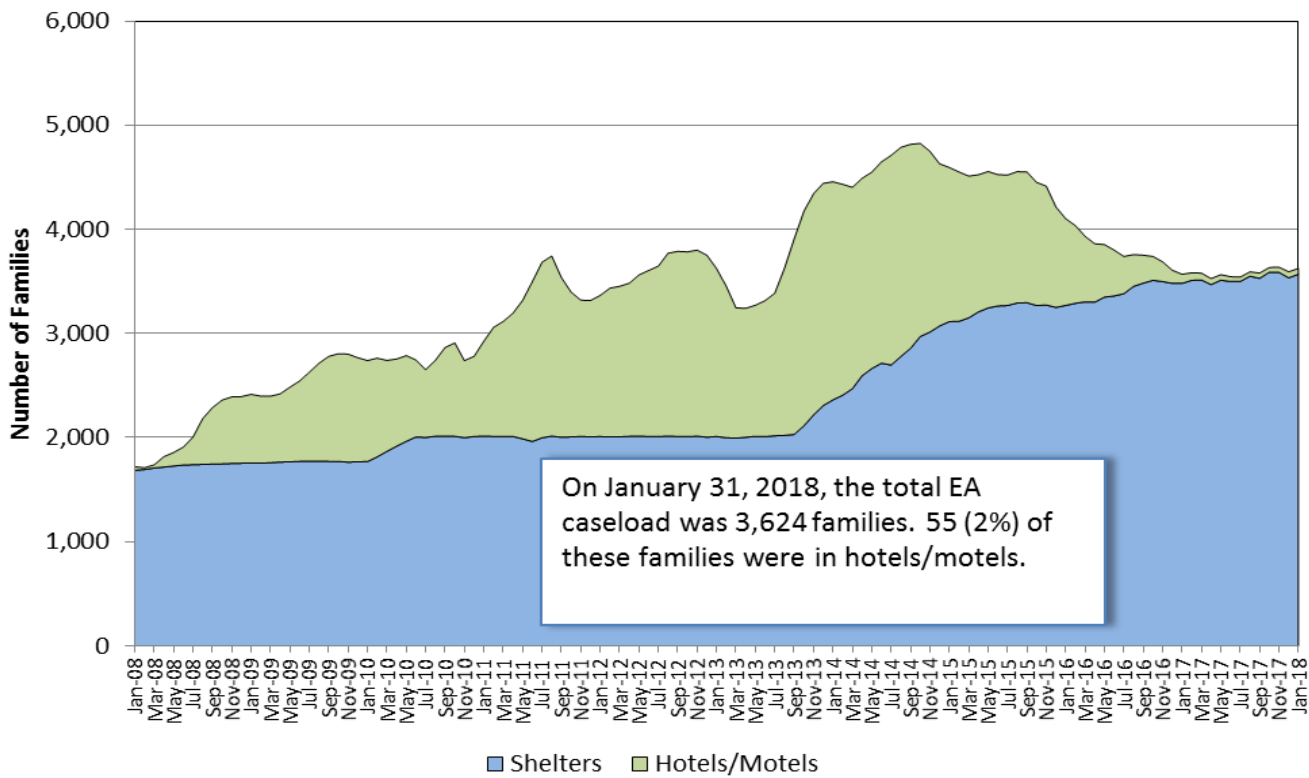
Sources: EA Daily Entry Reports and ASIST.

EA Shelter and Hotel/Motel Placements



EA Caseload

Average Daily EA Shelter & Hotel/Motel Caseload, Jan. 2008 - Jan. 2018



Note: Methodology for calculating shelter caseload changed in FY15 from an average daily number of contracted units (minus vacancies) to an end-of-the-month count of occupied shelter units using DHCD's bed registry.

EA Exits

Families Exiting Shelter and Hotels/Motels	Jan-18		Dec-17		Year-to-Date	
	Number	Percent	Number	Percent	Number	Percent
Total Exits	302	100%	305	100%	1,971	100%
Abandoned	36	12%	32	10%	261	13%
Criminal Activity	0	0%	1	<1%	4	<1%
Feasible Alternative Housing with HB	189	63%	188	62%	1,089	55%
Feasible Alternative Housing without HB	31	10%	47	15%	313	16%
Ineligible	8	3%	4	1%	47	2%
Rejected Placement	0	0%	3	1%	15	1%
NonCompliance	7	2%	5	2%	39	2%
Temporary Shelter Interruption	24	8%	18	6%	169	9%
Other/Unknown	7	2%	7	2%	34	2%

Notes:
 Families terminated from shelter for abandoning their placements or non-compliance may return to the system pending an appeal.
 Families receiving a Temporary Shelter Interruption may return to the system within 30 days.

Types of Subsidies	Jan-18		Dec-17		Year-to-Date	
	Number	Percent	Number	Percent	Number	Percent
Total Families Receiving Subsidies	251	100%	239	100%	1,459	100%
ESG	1	<1%	0	0%	11	1%
HomeBASE	188	75%	188	79%	1,054	72%
HUD CoC	4	2%	1	0%	36	2%
MRVP	4	2%	9	4%	43	3%
Private Subsidized Housing	10	4%	6	3%	87	6%
Section 8 Mobile Voucher	73	29%	69	29%	227	16%
Section 8 Project-Based Voucher	9	4%	10	4%	45	3%
Other Public Housing	10	4%	5	2%	84	6%
Transportation	1	<1%	4	2%	20	1%

Notes:
 Families may receive multiple subsidy types. Therefore, the sum of the subsidy types do not equal the number of families.
 Data based on date of shelter/hotel exit. HomeBASE tracker data based on the date that checks are issued may vary.

RAFT - Homelessness Prevention

RAFT	Jan-18		Dec-17		Year-to-Date	
	Number	Percent	Number	Percent	Number	Percent
Families Applying	362		364		2,738	
Families Approved	307	100%	298	100%	2,318	100%
Asked to Leave	90	29%	102	34%	605	26%
Domestic Violence	9	3%	6	2%	106	5%
Eviction (Private)	89	29%	82	28%	676	29%
Eviction (Public/Subsidized Housing)	56	18%	51	17%	395	17%
Fire/Flood/Natural Disaster	21	7%	11	4%	40	2%
Foreclosure	4	1%	4	1%	24	1%
Health and Safety	7	2%	12	4%	67	3%
Severe Overcrowding	5	2%	3	1%	28	1%
Utility Shut-Off	11	4%	8	3%	274	12%
Other Crisis	15	5%	19	6%	103	4%

Expenditures

Expenditure Type	Jan-18	FY18 YTD	FY18 Budget	Percent Spent FY18 YTD
Emergency Assistance	\$15,157,985	\$102,616,385	\$154,883,948	66%
HomeBASE	\$2,140,616	\$16,559,560	\$30,147,305	55%
RAFT	\$971,002	\$7,514,861	\$13,000,000	58%

Note: Spending data are estimates since monthly invoicing was not complete at time of reporting.

**DHCD - EA Monthly Report
January 2018**

	Jan #	Jan %	Dec #	YTD	YTD (%)
Families Applying for EA					
Total	713	100%	544	4,875	100%
Boston	164	23%	121	967	20%
Central Mass	72	10%	46	374	8%
North Shore	209	29%	129	1,248	26%
South Shore	111	16%	107	981	20%
Western Mass	157	22%	141	1,305	27%
Families Placed in EA Shelter and Hotels/Motels					
Total	321	100%	300	2,175	100%
Boston	133	41%	134	876	40%
Central Mass	22	7%	32	185	9%
North Shore	53	17%	55	389	18%
South Shore	53	17%	39	345	16%
Western Mass	60	19%	40	380	17%
Average Daily Number of Families in Motels					
Statewide Average	57	100%	52	47	100%
Boston	32	56%	29	23	49%
Central Mass	3	5%	3	2	5%
North Shore	19	33%	16	20	42%
South Shore	3	5%	4	2	4%
Western Mass	0	0%	0	0	0%
HomeBASE Entries (Diversion and Exits)					
Total	285	100%	307	1,889	100%
Berkshire	6	2%	1	21	1%
CTI	28	10%	39	250	13%
FCRHRA	3	1%	2	15	1%
HAC	2	1%	4	26	1%
WF	50	18%	56	357	19%
MBHP	90	32%	85	391	21%
RCAP	9	3%	5	74	4%
SMOC	8	3%	13	48	3%
HSSEMA	70	25%	68	479	25%
LHAND	16	6%	17	138	7%
CMHA	3	1%	17	90	5%

Notes

Average Daily Number of Families in Hotels is calculated as the average across weekly point-in-time estimates from the reported month; Hotel region indicates region of originating eligibility office.

Totals may not equal the sum or regions due to rounding.

Sources: EA Daily Entry Report, ASIST, and EA Weekly Motel Reports.

DHCD - EA Monthly Report, Cumulative Data
January 2018

	Current Month		Jul	Aug	Sept	Oct	Nov	Dec	FY18	
	Jan #	Jan %							YTD #	YTD %
Families Applying for EA	713	100%	655	798	687	799	679	544	4,875	100%
Boston	164	23%	109	137	116	156	164	121	967	20%
Central Mass	72	10%	53	77	53	60	13	46	374	8%
North Shore	209	29%	175	218	183	186	148	129	1,248	26%
South Shore	111	16%	137	174	134	176	142	107	981	20%
Western Mass	157	22%	181	192	201	221	212	141	1,305	27%
Health & Safety Assessment										
H&S Assessment Completed	27	100%	250	304	254	289	197	211	1,532	100%
Families with H&S Risk	25	93%	228	277	221	260	169	180	1,360	89%
Families Placed in Shelter/Motels										
Total	321	100%	299	371	287	295	302	300	2,175	100%
Families Placed in Motels	3	1%	1	2	5	2	4	5	22	<1%
Presumptive Placement	32	10%	44	49	41	34	35	40	275	13%
Boston	133	41%	111	140	122	113	123	134	876	40%
Central Mass	22	7%	21	29	29	26	26	32	185	9%
North Shore	53	17%	68	70	39	50	54	55	389	18%
South Shore	53	17%	44	65	51	44	49	39	345	16%
Western Mass	60	19%	55	67	46	62	50	40	380	17%
Monthly Caseload (# of Families)	01/31/18		07/31/17	08/31/07	09/30/17	10/31/17	11/30/17	12/31/17		
Total	3,624	100%	3,541	3,591	3,580	3,633	3,636	3,592	3,600	100%
Shelter	3,569	98%	3,499	3,550	3,529	3,589	3,587	3,534	3,551	99%
Hotel/Motel	55	2%	42	41	51	44	49	58	49	1%
Average Number of Families in Motels										
Statewide Average	57	100%	42	42	46	46	44	52	47	100%
Boston	32	56%	15	16	21	24	23	29	23	49%
Central Mass	3	5%	2	2	2	2	3	3	2	5%
North Shore	19	33%	24	23	22	19	16	16	20	42%
South Shore	3	5%	1	1	1	2	2	4	2	4%
Western Mass	0	0%	0	0	0	0	0	0	0	0%
Placement to Application Ratio	59.3%		57.4%	58.3%	54.6%	52.9%	58.0%	74.6%	58.7%	

	Jan #	Jan %	Jul	Aug	Sept	Oct	Nov	Dec	YTD #	YTD %
Reasons for Homelessness, Shelter/Motels										
Total	321	100%	299	371	287	295	302	300	2,175	100%
Domestic Violence	47	15%	47	52	45	43	42	46	322	15%
Fire/Natural Disaster	3	1%	0	2	1	3	1	6	16	1%
Evict: Condemnation	12	4%	3	3	5	0	7	3	33	2%
Evict: Excused Conduct	1	<1%	2	2	1	0	1	0	7	<1%
Evict: Foreclosure	0	0%	0	2	1	4	4	1	12	1%
Evict: Non Payment - Medical	0	0%	0	0	2	0	0	0	2	<1%
Evict: Non Payment - Disability	0	0%	3	2	3	0	0	0	8	<1%
Evict: Non Payment - Income Loss	35	11%	15	23	27	30	24	27	181	8%
Evict: Non Renewal of Tenancy	2	1%	8	2	1	3	0	0	16	1%
Threatened Evict - Unauthorized Tenant	11	3%	29	15	8	10	11	8	92	4%
H&S: Violent Conduct	12	4%	7	10	9	5	7	7	57	3%
H&S: Mental Illness	1	<1%	3	4	4	1	2	2	17	1%
H&S: Substance Abuse	1	<1%	1	3	2	1	3	3	14	1%
H&S: Conditions in Unit	6	2%	7	9	3	5	4	7	41	2%
H&S: Irregular Housing situation	131	41%	113	146	113	118	115	106	842	39%
H&S: Not Meant for Human Habitation	41	13%	39	76	44	58	56	65	379	17%
Aid Pending	10	3%	8	7	5	2	9	7	48	2%
Replacement/TESI	8	2%	14	13	13	12	16	12	88	4%
Shelter and Hotel/Motel Exits										
Total	302	100%	283	286	269	235	291	305	1,971	100%
Abandoned	36	12%	60	39	35	20	39	32	261	13%
Criminal Activity/Fraud	0	0%	0	1	1	0	1	1	4	<1%
Feasible Alternative Housing with HB	189	63%	130	141	147	121	173	188	1,089	55%
Feasible Alternative Housing without HB	31	10%	46	46	47	49	47	47	313	16%
Ineligible	8	3%	9	9	4	7	6	4	47	2%
No Show/Rejected Placement	0	0%	5	3	1	2	1	3	15	1%
NonCompliance/Termination for Cause	7	2%	7	5	7	3	5	5	39	2%
Temporary Shelter Interruption	24	8%	24	37	23	26	17	18	169	9%
Other/Unknown	7	2%	2	5	4	7	2	7	34	2%
Hotel/Motel Exits										
Total	3	100%	3	1	1	2	3	2	15	100%
Abandoned	0	0%	0	0	0	0	2	0	2	13%
Criminal Activity	0	0%	0	0	0	0	0	0	0	0%
Feasible Alternative Housing with HB	1	33%	2	1	0	1	1	1	7	47%
Feasible Alternative Housing without HB	0	0%	0	0	0	1	0	0	1	7%
Ineligible	0	0%	0	0	0	0	0	0	0	0%
No Show/Rejected Placement	0	0%	0	0	0	0	0	1	1	7%
NonCompliance/Termination for Cause	0	0%	0	0	0	0	0	0	0	0%
Temporary Shelter Interruption	1	33%	1	0	0	0	0	0	2	13%
Other/Unknown	1	33%	0	0	1	0	0	0	2	13%

	Jan #	Jan %	Jul	Aug	Sept	Oct	Nov	Dec	YTD #	YTD %
Types of Subsidies at Exit										
Total Families Receiving Subsidies	251	100%	161	151	179	201	277	239	1,459	100%
ESG	1	<1%	4	2	2	1	1	0	11	1%
HomeBASE	188	75%	130	107	147	121	173	188	1054	72%
HUD CoC	4	2%	8	4	9	5	5	1	36	2%
MRVP	4	2%	5	7	6	6	6	9	43	3%
Private Subsidized Housing	10	4%	13	21	12	8	17	6	87	6%
Section 8 Mobile Voucher	73	29%	5	13	8	12	47	69	227	16%
Section 8 Project-Based Voucher	9	4%	6	3	4	5	8	10	45	3%
Other Public Housing	10	4%	6	15	17	17	14	5	84	6%
Transportation	1	<1%	3	3	3	0	6	4	20	1%
HomeBASE Entries (Diversion and Exits)										
Total	285	100%	224	250	268	287	268	307	1,889	100%
Berkshire	6	2%	2	3	1	5	3	1	21	1%
CTI	28	10%	38	36	45	29	35	39	250	13%
FCRHRA	3	1%	0	4	0	4	2	2	15	1%
HAC	2	1%	1	8	2	4	5	4	26	1%
WF	50	18%	44	49	48	60	50	56	357	19%
MBHP	90	32%	30	34	56	48	48	85	391	21%
RCAP	9	3%	12	18	5	8	17	5	74	4%
SMOC	8	3%	2	5	4	6	10	13	48	3%
HSSEMA	70	25%	64	59	71	70	77	68	479	25%
LHAND	16	6%	18	16	29	31	11	17	138	7%
CMHA	3	1%	13	18	7	22	10	17	90	5%
HomeBASE Diversion by Region										
Total	102	100%	77	94	88	128	92	106	687	100%
Berkshire	4	4%	0	2	1	4	1	1	13	2%
CTI	20	20%	22	27	29	25	26	24	173	25%
FCRHRA	1	1%	0	2	0	1	0	0	4	1%
HAC	1	1%	1	3	1	1	1	4	12	2%
WF	28	27%	16	21	18	31	15	22	151	22%
MBHP	5	5%	5	4	4	4	3	3	28	4%
RCAP	3	3%	0	1	1	3	3	1	12	2%
SMOC	1	1%	0	1	0	4	1	0	7	1%
HSSEMA	32	31%	26	23	29	35	36	36	217	32%
LHAND	6	6%	4	7	5	19	6	9	56	8%
CMHA	1	1%	3	3	0	1	0	6	14	2%

	Jan #	Jan %	Jul	Aug	Sept	Oct	Nov	Dec	YTD #	YTD %
HomeBASE Shelter Exits by Region										
Total	180	100%	146	150	178	152	173	200	1,179	100%
Berkshire	2	1%	2	0	0	1	2	0	7	1%
CTI	8	4%	16	9	16	4	9	15	77	7%
FCRHRA	2	1%	0	2	0	3	2	2	11	1%
HAC	1	1%	0	5	1	3	4	0	14	1%
WF	22	12%	28	28	30	29	35	34	206	17%
MBHP	83	46%	24	27	52	41	42	81	350	30%
RCAP	6	3%	12	17	4	5	14	4	62	5%
SMOC	7	4%	2	4	4	2	9	13	41	3%
HSSEMA	38	21%	38	36	42	35	41	32	262	22%
LHAND	9	5%	14	7	22	8	5	8	73	6%
CMHA	2	1%	10	15	7	21	10	11	76	6%
HomeBASE Hotel Exits by Region										
Total	3	100%	1	6	2	7	3	1	23	100%
Berkshire	0	0%	0	1	0	0	0	0	1	4%
CTI	0	0%	0	0	0	0	0	0	0	0%
FCRHRA	0	0%	0	0	0	0	0	0	0	0%
HAC	0	0%	0	0	0	0	0	0	0	0%
WF	0	0%	0	0	0	0	0	0	0	0%
MBHP	2	67%	1	3	0	3	3	1	13	57%
RCAP	0	0%	0	0	0	0	0	0	0	0%
SMOC	0	0%	0	0	0	0	0	0	0	0%
HSSEMA	0	0%	0	0	0	0	0	0	0	0%
LHAND	1	33%	0	2	2	4	0	0	9	39%
CMHA	0	0%	0	0	0	0	0	0	0	0%
RAFT										
Total Applying	362		249	472	419	438	434	364	2,738	
Total Approved	307	100%	190	391	370	399	363	298	2,318	100%
Asked to Leave	90	29%	4	115	91	89	114	102	605	26%
Domestic Violence	9	3%	65	9	6	5	6	6	106	5%
Eviction (Private)	89	29%	67	108	95	137	98	82	676	29%
Eviction (Public/Subsidized Housing)	56	18%	19	57	80	65	67	51	395	17%
Fire/Flood/Natural Disaster	21	7%	1	1	0	3	3	11	40	2%
Foreclosure	4	1%	1	3	3	6	3	4	24	1%
Health and Safety	7	2%	5	13	9	9	12	12	67	3%
Severe Overcrowding	5	2%	1	7	2	5	5	3	28	1%
Utility Shut-Off	11	4%	15	66	73	58	43	8	274	12%
Other Crisis	15	5%	12	12	11	22	12	19	103	4%